

Annual Report **2014-15**



Research Grants Council
of Hong Kong

香港 研究資助局



Research Grants Council
of Hong Kong

香港 研究資助局

Research Grants Council Members 2014/15 研究资助局 2014/15 年度成员



Left to Right Rear:

Ms Sharon Ho (Secretary, RGC), Prof On-ching Yue, Dr Richard Armour (Secretary-General, UGC), Prof Kar-yan Tam, Mr Allen Kam-sing Ma, Prof Paul Clark, Prof Iris Benzie, Prof Joanna Ho, Prof Arthur B Ellis, Prof Jack Chun-
yiu Cheng, Prof Chun Hui, Prof Jay Siegel, Prof Paul KH Tam, Ms Ling Ho (Assistant Secretary-General (Research) 3, UGC), Mrs Alice Sham (Assistant Secretary-General (Research) 1, UGC), Mrs Lowell Cho (Assistant Secretary-General (Research) 2, UGC)

Left to Right Front:

Prof Ross Murch, Prof Wing-hung Wong, Prof Anne Cooke, Prof Edward Sze-shing Yeung, Prof Rocky S Tuan, Prof Louis KC Chan, Prof Ronnie Po-chia Hsia, Prof Benjamin W Wah (Chairman, RGC), Prof Paul KL Yu, Prof Yip-wah Chung, Prof Chao-jun Li, Prof Moses HW Chan, Dr Nim-kwan Cheung, Prof Terry KF Au

Absent: Prof Peter Baehr

后排由左至右：

何皓璇女士(研资局秘书)，余安正教授，安礼治博士(教资会秘书长)，谭嘉因教授，马锦星先生，Paul Clark教授，Iris Benzie教授，何莉芸教授，Arthur B Ellis教授，郑振耀教授，许浚教授，Jay Siegel教授，谭广亨教授，何佩玲女士(教资会助理秘书长(研究)3)，沈黄美然女士(教资会助理秘书长(研究)1)，曹黎淑霞女士(教资会助理秘书长(研究)2)

前排由左至右：

穆乐思教授，王永雄教授，Anne Cooke教授，杨仕成教授，段崇智教授，陈国器教授，夏伯嘉教授，华云生教授(研资局主席)，余劭离教授，锺业华教授，李朝军教授，陈鸿渭教授，张念坤博士，区洁芳教授

缺席：Peter Baehr 教授

本署档号 OUR REF.: UGC/GEN/232/92

来函档号 YOUR REF.:

电 话 TELEPHONE:

中国香港湾仔港湾道6至8号瑞安中心7楼
7/F Shui On Centre, 6-8 Harbour Road
Wan Chai, Hong Kong, China
电话 Tel: (852) 2524 3987
传真 Fax: (852) 2845 1596
电子邮箱 E-Mail: ugc@ugc.edu.hk
网址 Homepage: www.ugc.edu.hk

1 November 2016

Mr Carlson Tong, SBS, JP
Chairman
University Grants Committee
7/F Shui On Centre
6-8 Harbour Road
Wanchai
Hong Kong

Dear Chairman,

Research Grants Council
Report for 2014-15

Under its terms of reference, the Research Grants Council (RGC) is required, among other things, to report on its work annually to the Government through the University Grants Committee.

I have the pleasure to submit herewith the report of the Research Grants Council covering the twenty-fourth year of the Council's operations. The report will be mounted on the RGC's website in order to reach a wider audience.

I should be grateful if you would forward the report to the Government of the Hong Kong Special Administrative Region.

Yours sincerely,



Benjamin Wah
Chairman
Research Grants Council

本署档号 OUR REF.: UGC/GEN/232/92

来函档号 YOUR REF.:

电 话 TELEPHONE:

中国香港湾仔港湾道6至8号瑞安中心7楼
7/F Shui On Centre, 6-8 Harbour Road
Wan Chai, Hong Kong, China
电话 Tel: (852) 2524 3987
传真 Fax: (852) 2845 1596
电子邮箱 E-Mail: ugc@ugc.edu.hk
网址 Homepage: www.ugc.edu.hk

香港湾仔港湾道6至8号
瑞安中心7楼
大学教育资助委员会主席
唐家成先生, SBS, JP

唐主席：

研究资助局二零一四至一五年度报告

研究资助局(研资局)的职权范围其中一项，是本局须透过大学教育资助委员会向政府提交周年工作报告。

现附上研资局的报告，载述本局的第二十四年运作情况。这份年报会载于研资局的网页，以便更多读者可以阅览。

谨请将这份报告呈交香港特别行政区政府。



研究资助局主席华云生

二零一六年十一月一日

Foreword from the Chairman 主席序言	8
The Research Grants Council and its Organisation 研究资助局及其架构	
The Research Grants Council 研究资助局的组成	13
Terms of Reference 职权范围	13
How the Research Grants Council is Organised 运作与架构	15
Subject Panels 学科小组	15
Collaborative Research Fund Committee 协作研究金委员会	16
Major Projects Steering Committee 大型研究项目督导委员会	16
Steering Committee on Competitive Research Funding for the Self-financing Degree Sector 自资学位界别竞逐研究资助督导委员会	17
Hong Kong PhD Fellowship Scheme Steering Committee 香港博士研究生奖学金计划督导委员会	17
Disciplinary Committee 纪律委员会	17
Funding Sources 资金来源	
Research Endowment Fund 研究基金	18
Background of the Research Endowment Fund 研究基金的背景	18
Earmarked Research Grants 研究用途补助金	18
Theme-based Research Scheme 主题研究计划	18
Competitive Research Funding Schemes for Local Self-financing Degree Sector 本地自资学位界别竞逐研究资助计划	19
UGC Funds 教资会拨款	19
Areas of Excellence Scheme 卓越学科领域计划	19
Hong Kong PhD Fellowship Scheme 香港博士研究生奖学金计划	19

Research Funding Schemes and RGC Activities

研究资助计划及研资局的工作

RGC Activities funded by Research Endowment Fund 研资局由研究基金资助的工作总览	20
Allocation of the Earmarked Research Grants: 2014/15 Academic Year 2014/15 学年研究用途补助金的分配	20
How the Earmarked Research Grants were Allocated 研究用途补助金的具体分配	20
General Research Fund 优配研究金	22
• Clinical Research Fellowship 临床医学研究资助计划	23
• Employment of Relief Teacher under the Humanities and Social Sciences Disciplines 人文学及社会科学学科的聘用替假教师安排	23
• Provision of Research Experience for Undergraduate Students 本科生研究津贴	23
Early Career Scheme 杰出青年学者计划	24
Collaborative Research Fund 协作研究金	25
Joint Research Schemes 合作研究计划	26
Project Grants 项目补助金	26
• National Natural Science Foundation of China/Research Grants Council Joint Research Scheme 国家自然科学基金委员会及香港研资局联合科研资助基金	26
• The French National Research Agency/Research Grants Council Joint Research Scheme 法国国家科研署与研资局合作研究计划	27
• Scottish Funding Council/Research Grants Council Joint Research Scheme 苏格兰拨款委员会与研资局合作研究计划	27
Travel/Conference Grants 旅费/会议补助金	28
• Germany/Hong Kong Joint Research Scheme 德国与香港合作研究计划	28
• PROCORE – France/Hong Kong Joint Research Scheme 法国与香港合作研究计划	28
Fellowships 研究奖助金	29
• Fulbright – RGC Hong Kong Senior Research Scholar/ Research Scholar Award Programmes 富布莱特－研资局香港学人/青年学人计划	29
• Hong Kong-Scotland Partners in Post Doctoral Research 香港与苏格兰合作博士后研究计划	29
Humanities and Social Sciences Prestigious Fellowship Scheme 人文学及社会科学杰出学者计划	30
Research Postgraduate Students Conference/Seminar Grants 研究生会议/研讨会补助金	31

Theme-based Research Scheme 主题研究计划	32
Competitive Research Funding Schemes for the Local Self-financing Degree Sector 供本地自资学位界别竞逐的研究资助计划	33
RGC Activities funded by UGC Funds 研资局由教资会拨款的工作总览	35
Hong Kong PhD Fellowship Scheme 香港博士研究生奖学金计划	35
RGC Visits to UGC-funded institutions 研资局访问教资会资助院校	36
Provision of Expert Advice in Assessment of Academic Research Proposals 为学术研究建议书的评审提供专家意见	36
State Natural Science Award 国家自然科学奖	36
How Funded Projects are Selected, Monitored and Assessed 资助项目的审批、监察与评核	
How Projects are Selected 厘定拨款的准则	37
Why Monitor and Assess 监察与评核的目标	37
Monitoring of On-going Projects 监察进展中的项目	38
Assessment of Completed Projects 评核已完成的项目	38
Feedback on Assessments 反映评核的意见	39
Public Access to Completion Reports 公开完成报告	39
The Research Funding Environment in Hong Kong 香港研究资助环境面面观	
Overview 概述	40
New Research Grants and Contracts 新增研究项目及合约	40
On-going Research Grants and Contracts 进展中的研究项目及合约	41
Funding for On-going Research Grant Projects 进展中研究项目的拨款	43
Research Output in Hong Kong 香港的研究成果	44
RGC Contacts with Other Funding Bodies 研资局与其他研究资助机构的联系	44
Appendices 附录	45

Foreword from the Chairman 主席序言

The Research Grants Council (RGC) had a challenging yet fruitful year. It is encouraging to note that our funded programmes have continued to achieve excellent results in a number of research areas.

Research Grants Council Highlighted Activities in 2014-15

General Research Fund

Some 69% of RGC's budget is allocated for the General Research Fund which supports a large number of researchers. The aim is to supplement institutions' own research support to those who have achieved or have the potential to achieve excellence. This past year, out of 2 661 applications from a wide range of disciplines, we funded a total of HK\$595 million for 972 research projects.

Early Career Scheme

The Early Career Scheme is intended to nurture junior academics and to prepare them for a career in education and research. In the 2014/15 academic year, out of 359 applications, 154 projects were funded at a total amount of HK\$94 million, with 22 of them rated "Outstanding". The applicants of these projects were each granted an honorary title of "The Early Career Award 2014/15".

Collaborative Research Fund

The Collaborative Research Fund (CRF) Scheme supports multi-investigators, multi-disciplinary projects. In order to encourage more research groups to engage in creative and high quality cross-disciplinary projects, the budget of the 2014/15 exercise was increased from HK\$100 million to HK\$110 million. In addition, in the 2014/15 exercise, HK\$60 million was provided by the University Grants Committee (UGC) on a one-off basis to support the procurement of major research facilities, equipment or library collections.

The annual CRF Symposium was held in December 2014 at the City University of Hong Kong where the progress of 12 funded projects was presented. The Symposium generated interesting discussions among researchers and provided excellent opportunities for research students to exchange views and strengthen collaborations.

过去一年，研究资助局(研资局)的工作富挑战但满有成果，本局的资助项目在多个研究范畴继续取得卓越成绩，实在令人鼓舞。

研究资助局 2014-15 的重点活动

优配研究金

研资局的财政预算中，约69%的资源拨作优配研究金，资助为数不少的学者进行研究。优配研究金的目的，是在院校为学者提供的研究资助以外，给表现卓越或潜质优厚的学者额外资助。过去一年，研资局收到2 661份不同学科的申请，其中972个研究项目获得资助，拨款合共5.95亿港元。

杰出青年学者计划

杰出青年学者计划旨在培育新进学者，帮助他们为日后的教学及研究事业作好准备。于2014/15学年，研资局共接获359个申请，其中154个研究项目获得资助，总额为9,400万港元，当中22个项目更获评核为「卓越」级别。这些申请人每人可获得「2014/15年度杰出青年学者奖」殊荣。

协作研究金

协作研究金旨在资助由多名学者合作的跨学科研究项目。为鼓励研究单位进行更多具创意及高质素的跨学科研究项目，2014/15年度的拨款已由1亿港元增至1.1亿港元。除此之外，于2014/15年度，大学教育资助委员会(教资会)一次性拨款6,000万港元作为资助院校购置大型研究设备、仪器或图书馆资料。

2014年12月，研资局于香港城市大学举办一年一度的协作研究金研讨会，让12队获资助研究队伍汇报项目的进度。研讨会不但引起学者们的热烈讨论，同时亦提供难得的机会，让研究生与学者交流意见，加强彼此的合作。



Professor Edward Yeung, Chairman of the CRF Committee, delivered a speech at the CRF Symposium 2014.

协作研究金委员会主席杨仕成教授于2014年度协作研究金研讨会上致辞。

Joint Research Schemes

In the 2014/15 academic year, the RGC ran seven Joint Research Schemes with partner agencies in other regions. Following the signing of framework agreement with the Scottish Funding Council (SFC) in late 2013, the RGC launched a new joint research scheme with the SFC in the 2014/15 academic year. The scheme provides researchers with initial funding to promote collaboration between scientists in Hong Kong and Scottish Universities. In the first exercise, 13 applications were selected for funding support, with total RGC grants of HK\$1.57 million.

Humanities and Social Sciences Prestigious Fellowship Scheme

The Humanities and Social Sciences Prestigious Fellowship Scheme was established to recognize excellence in the Humanities and Social Sciences. It provides extended time-off and supporting funds to the outstanding investigators under the Humanities and Social Sciences Panel to enable them to focus on research work and writing. The fellowship provides resources for the employment of relief teachers, as well as the costs of travel, subsistence and dissemination of outputs. Seven prestigious investigators were awarded in the 2014/15 academic year and HK\$5.26 million in total was funded.

Theme-based Research Scheme

The objective of the Theme-based Research Scheme (TRS) is to focus academic research efforts of the UGC-funded institutions on themes of strategic importance to the long-term development of Hong Kong. The fourth round exercise was held in the 2014/15 academic year. A total of 37 preliminary proposals were received. After the preliminary selection and a vigorous process of peer-review, the RGC allocated HK\$205 million to support four projects.

合作研究计划

于2014/15学年，研资局分别与不同地区合办七个合作研究计划。研资局于2013年底与苏格兰拨款委员会签订框架协议，并于2014/15学年与该委员会推出新的合作研究计划。该计划为研究人员提供初期拨款，以促进两地科学家的合作。首轮计划中有13份申请获批资助。研资局合共批出约157万港元。

人文学及社会科学杰出学者计划

人文学及社会科学杰出学者计划旨在表扬杰出的人文学及社会科学学者。此计划为人文学及社会科学学科小组辖下的优秀研究人员提供休假及资助，让他们专心从事研究及写作。计划不单提供资源聘请替假教师，还包括旅费、生活津贴及发表研究结果的费用。于2014/15学年，七名杰出学者获得资助，总额为526万港元。

主题研究计划

主题研究计划的目的是集中教资会资助院校的学术研究力量，对香港长远发展具策略重要性的主题进行研究。第四轮计划于2014/15学年举行。研资局共收到37份初步研究计划书。经过初步筛选及严格的学者评审后，研资局拨款约2.05亿港元，资助共四个研究项目。

Competitive Research Funding Schemes for the Local Self-financing Degree Sector

The RGC first launched the new research funding schemes for the local self-financing degree sector in 2013. They are namely the Faculty Development Scheme, the Institutional Development Scheme and the Inter-Institutional Development Scheme. The results of the First Round exercise were announced in August 2014. Out of 240 applications in the First Round exercise, RGC funded a total of HK\$101 million for 63 research projects. Following the completion of the First Round exercise and the Phase Two Consultation, five more institutions were included in the Second Round exercise in December 2014 on top of the seven local self-financing degree-awarding institutions in the First Round exercise to extend the funding schemes to all eligible institutions in the local self-financing degree sector. The results of the Second Round exercise will be announced in August 2015.

Areas of Excellence Scheme

With effect from February 2012, the administration of the Areas of Excellence (AoE) Scheme was transferred from the UGC to the RGC. The Scheme provides support to the UGC-funded institutions to build upon their existing strengths and develop them into areas of excellence. The Sixth Round exercise was held in the 2013/14 academic year. A total of 32 preliminary proposals were received. After a rigorous selection process, three projects were supported with total funding of HK\$144 million. In the 2014/15 academic year, the number of on-going projects monitored by the RGC is 11.

Hong Kong PhD Fellowship Scheme

The Hong Kong PhD Fellowship Scheme (HKPFS) continues to enhance internationalisation of our higher education sector. In the first five rounds of exercises, about 810 candidates from more than 60 countries/regions were selected to pursue their PhD studies in Hong Kong.

The Awardees Reception of the HKPFS was held in November 2014. The Steering Committee, Selection Panel Members and representatives of institutions, together with the past awardees, were invited to the Awardees Reception to welcome the new awardees.

供本地自资学位界别竞逐的研究资助计划

研资局于2013年起为本地自资学位界别推出三项研究资助计划，分别为教员发展计划、院校发展计划及跨院校发展计划。第一轮计划申请拨款结果于2014年8月公布。于2014/15年度，研资局在第一轮计划共收到240份申请，其中63个研究项目获得资助，拨款合共1.01亿港元。随着第一轮计划和第二期咨询的结束，除参与首轮计划的七所颁授本地自资学位院校外，再有五所院校参与2014年12月推出的第二轮计划，使资助计划扩展至本地自资学位界别中的其他院校。第二轮计划申请拨款结果将于2015年8月公布。

卓越学科领域计划

由2012年2月起，卓越学科领域计划由教资会交予研资局管理。计划协助教资会资助院校把现有优势发展为卓越学科领域。第六轮计划在2013/14学年举行。研资局共收到32份初步研究计划书。经过严格的评审过程后，我们选出三个项目予以资助，共批出1.44亿港元拨款。在2014/15学年，研资局就11个进行中的研究项目进行监察。

香港博士研究生奖学金计划

研资局继续推行香港博士研究生奖学金计划，推动本地高等教育院校国际化。在首五届计划中，有大概810名来自超过60个国家及地区的申请人脱颖而出，在香港修读博士研究生课程。

香港博士研究生奖学金计划的得奖者茶叙已于2014年11月举行，并诚邀了督导委员会委员、遴选小组成员、院校代表，以及历届得奖者出席茶叙，欢迎新一届的得奖者。



HKPFS awardees with Professor Benjamin Wah, Chairman, RGC.
香港博士研究生奖学金计划的得奖者与研资局主席华云生教授合照。



Professor Benjamin Wah, Chairman, RGC, invited awardees to share experience.
研资局主席华云生教授邀请得奖者分享经验。

RGC Public Lectures

To share the research findings with the community, researchers of the RGC funded projects have been invited to deliver public lectures since April 2009. In the 2014/15 academic year, the RGC jointly held four RGC Public Lectures on “Sustainable Built Environment”, “Social Considerations for Urban Renewal and Urban Planning” and “Waste Treatment” with the Hong Kong Science Museum and the Hong Kong Central Library respectively. Active participation from the community was received.

RGC’s Strategic Planning

In the areas of research and technology development, the competition for talents has become severe in recent years globally. In particular, Hong Kong has been facing challenges and competition directly from the Mainland and other Asian countries. Thus, it is essential for Hong Kong to maintain its competitiveness and build up our researchers’ capability to world-class level.

Launched in 2010, the TRS supports large-scale collaborative research projects. Themes and grand challenge topics were set for the TRS to focus academic research efforts on themes of strategic importance to the long-term development of Hong Kong. In February 2015, the Education Bureau (EDB) completed a review on the themes of the TRS. Having considered the latest research developments locally and regionally, and consolidated the views of the stakeholders, the EDB decided to introduce a new theme “Advancing Emerging Research and Innovations Important to Hong Kong” in addition to the existing three themes “Promoting Good Health”, “Developing a Sustainable Environment” and “Enhancing Hong Kong’s Strategic Position as a Regional and International Business Centre”.

研资局公众讲座

为了与市民分享研究成果，研资局自2009年4月起定期举办公众讲座，邀请获研资局资助的学者，向市民介绍他们的研究工作。研资局于2014/15学年分别与香港科学馆及香港中央图书馆合办共四场公众讲座，以「可持续发展的环境」、「城市规划、重建与社会因素」及「废物处理」为题，市民反应热烈。

研资局的策略计划

在研究及科技发展方面，近年世界各地在吸纳科研人才的竞争日趋激烈，而香港更要直接面对内地及其他亚洲国家的挑战，故此香港需要保持竞争力，并继续提升我们研究人员的科研能力达至世界级水平。

主题研究计划于2010年推出，为大型协作研究项目提供资助。计划设立研究主题及具挑战性的题目，旨在集中学术研究力量，对香港长远发展具策略重要性的主题进行研究。教育局于2015年2月完成对研究主题的检讨。在考虑香港及区域内研究的最新发展，及归纳了持份者的意见后，决定除维持现时三个主题即「促进健康」、「建设可持续发展的环境」及「加强香港作为地区及国际商业中心的策略性地位」外，新增一个名为「促进对香港起重要作用的新兴研究及创新项目」的主题。

The RGC has also conducted a review on the grand challenge topics by inviting institutions to provide comments on the grand challenge topics of the existing themes and suggestions on topics for the new theme. The new/ revised grand challenge topics will be implemented in the 2016/17 academic year.

The scope of the RGC Review planned in 2015 has been expanded to cover its structure, operations and the portfolio balance of its research funding schemes, and to give recommendations by making reference to the standards and good practice in the operation of research funding agencies in other jurisdictions. The Review will be conducted in two phases: Phase I of the Review will cover macro issues such as the portfolio balance of the RGC funding schemes while Phase II will cover micro issues such as the quality of the assessment and monitoring processes. To neutralize the perceived conflict of interest, the UGC will assume the oversight responsibility of the Phase I Review. Findings and recommendation of the Phase I Review will likely be available around mid 2017. The Phase II Review will be conducted after the findings of the Phase I Review are available.

In the years to come, the RGC will remain committed to enhancing local academic research efforts to facilitate the pursuit of excellence, with a view to sharpening our competitive edges in the context of global academic research and bringing our research level to world class.

The research work in Hong Kong is making good progress. This is attributable to the incessant efforts of the higher education sector. I am grateful for local academics' support and their remarkable research results over the past year. It gives me great pleasure to present the RGC Annual Report for 2014-15, which outlines the work and achievements of the Council in the reported year.

研资局亦为具挑战性的题目进行检讨，邀请院校提交对现有主题下的具挑战性的题目的意见，以及新设主题下的题目建议。新设及经修订的具挑战性的题目将于2016/17学年推出。

原订于2015年进行的研资局检讨工作，检讨范围已扩大至涵盖研资局的架构、运作及各研究资助计划的组合分配，并透过参考海外其他研究资助机构的作业标准和良好做法作出建议。有关检讨会分两个阶段进行：第一阶段涵盖宏观事宜，例如研资局资助计划的组合分配，而第二阶段涵盖微观事宜，例如评审和监察程序的质素。为化解潜在或表面利益冲突，教资会将负起第一阶段检讨的监督责任。第一阶段检讨的结果和建议将于2017年中提交。第二阶段检讨将于第一阶段检讨工作完后展开。

研资局会继续推动本地的学术研究工作，追求卓越，致力提升香港在国际学术研究上的竞争力，使本地研究提升至国际水平。

香港的研究工作发展良好，有赖高等教育界不懈的努力。我衷心致谢各界在过去一年的鼎力支持，使在学术研究取得骄人的成就。现提交《研究资助局2014-15年报》，汇报研资局过去一年的工作和成果。

The Research Grants Council and its Organisation 研究资助局及其架构

The Research Grants Council

The Research Grants Council (RGC) is a non-statutory advisory council operating under the aegis of the University Grants Committee (UGC). It was formally established on 1 January 1991 to replace the Research Sub-Committee of the UGC.

The RGC's members are appointed by the Chief Executive^{Note} of the Hong Kong Special Administrative Region (HKSAR) and comprise non-local academics, local academics and local lay persons. All members are appointed on an ad personam basis. The RGC's membership for 2014/15 is listed in Appendix A.

Terms of Reference

The RGC's Terms of Reference are:

- To advise the HKSAR Government, through the UGC, on the needs of the institutions of higher education in Hong Kong in the field of academic research, including the identification of priority areas, in order that a research base adequate for the maintenance of academic vigour and pertinent to the needs of Hong Kong may be developed.
- To invite and receive, through the institutions of higher education, applications for research grants from academic staff and for the award of studentships and post-doctoral fellowships; to approve awards and other disbursements from funds made available by the HKSAR Government through the UGC for research; to monitor the implementation of such grants and to report at least annually to the HKSAR Government through the UGC.

Note: The HKSAR Chief Executive has delegated his authority to appoint the RGC members to the Secretary for Education.

研究资助局的组成

研究资助局(研资局)为大学教育资助委员会(教资会)辖下的非法定咨询机构,于1991年1月1日成立,取代当时教资会辖下的研究小组委员会。

研资局的成员由香港特别行政区行政长官委任^注,包括本港及非本地学者,以及本港的非学术界人士,所有成员均以个人身分获委任。研资局2014/15年度的成员名单载于附录A。

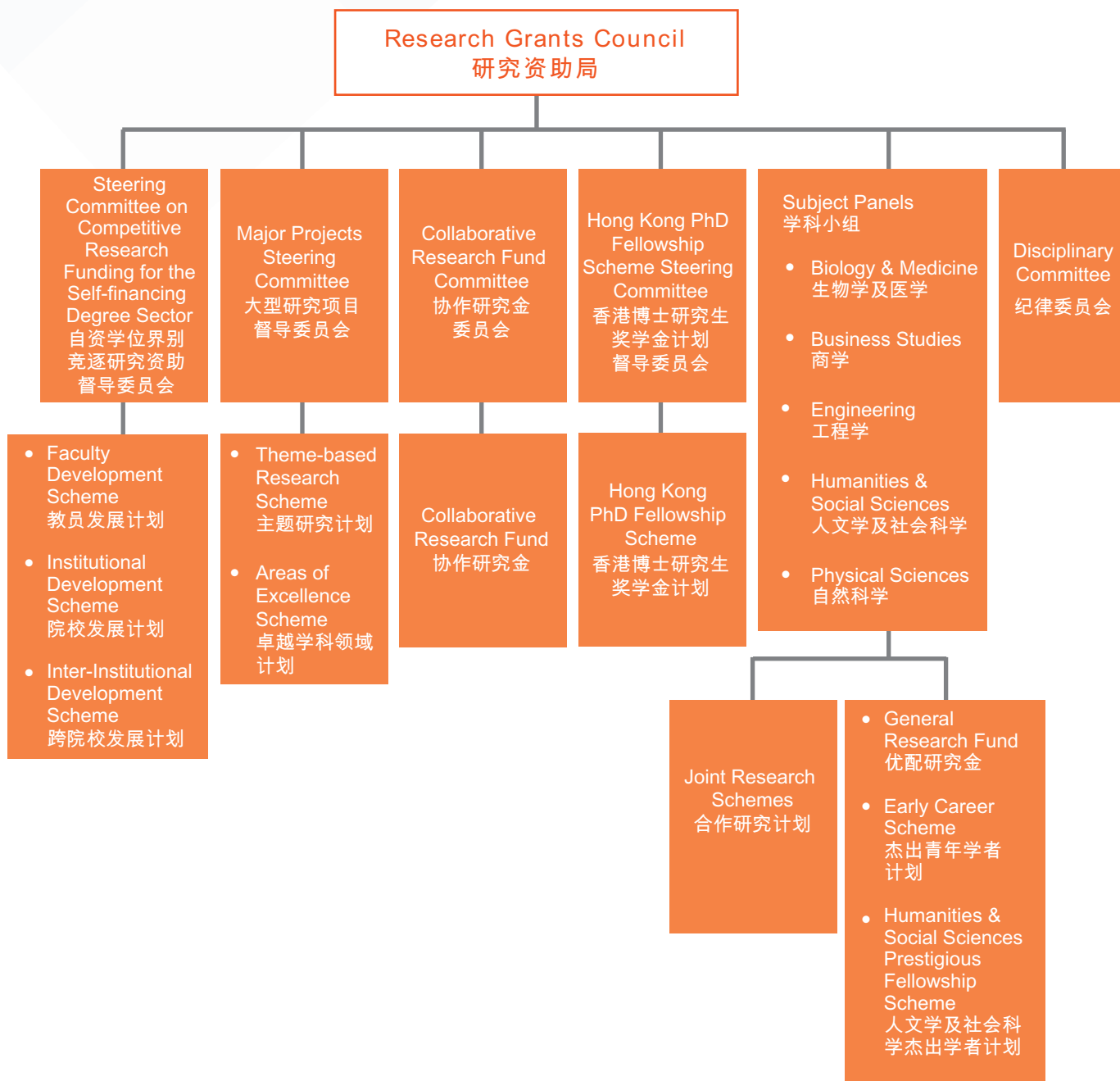
职权范围

研资局的职权如下:

- 透过教资会,向香港特别行政区政府建议香港高等教育机构在学术研究上的需要,包括鉴定优先范围,以发展一个足以维持学术蓬勃发展和合乎香港需要的学术研究基础。
- 透过高等教育机构,邀请和接受学术人士申请研究资助以及各类研究生申请奖学金;将香港特别行政区政府透过教资会提供的经费拨作研究资助和其他有关支出之用。此外,并负责监管这些拨款的运用,以及最少每年一次透过教资会向香港特别行政区政府报告。

注: 香港特别行政区行政长官授权教育局局长委任研资局的成员。

Chart 1.1: RGC Organisational Structure
表 1.1：研资局的组织架构



How the Research Grants Council is Organised

The RGC works in close partnership with the UGC and advises and reports to the Government through the UGC on matters within its purview. The organisational structure of the RGC is presented in Chart 1.1.

The RGC meets twice a year, in June and December respectively. The June meeting mainly involves the allocation of research grants submitted under funding schemes such as the General Research Fund, the Early Career Scheme, the Humanities and Social Sciences Prestigious Fellowship Scheme and the Theme-based Research Scheme; and a preliminary consideration of new applications under the Areas of Excellence Scheme. The December meeting is usually devoted to examining resource allocation among various established and new funding initiatives for the following year; the allocation of research grants submitted under the Collaborative Research Fund and the Areas of Excellence Scheme; and a preliminary consideration of new applications under the Theme-based Research Scheme.

Subject Panels

Starting from 2012/13, there are two pools of Subject Panel members in the following disciplines:

- Biology and Medicine
- Business Studies
- Engineering
- Humanities and Social Sciences
- Physical Sciences

One pool is responsible for the evaluation of applications submitted under the General Research Fund, the Early Career Scheme and the Humanities and Social Sciences Prestigious Fellowship Scheme. It is also responsible for monitoring the approved projects. Another pool is responsible for applications and projects submitted under the Joint Research Schemes. These panels consist of local academics and non-local academics.

The Subject Panels of the first pool normally meet once in June every year before the RGC meetings, primarily to select applications for allocations as well as to monitor on-going projects and assess completed projects.

Applications for research grants are assessed through peer review by panel members and external reviewers, all of whom are recognized experts in their fields in or outside Hong Kong. The panels report to the RGC with recommendations on which projects should be funded after their meetings.

运作与架构

研资局与教资会紧密合作，就其职权范围内的事务，透过教资会向政府提交建议及报告。研资局的架构，请参阅表 1.1。

研资局每年分别于6月及12月召开两次会议。6月份的会议主要讨论多项资助计划如优配研究金、杰出青年学者计划、人文学及社会科学杰出学者计划、主题研究计划的拨款建议，以及对卓越学科领域计划的申请作初步考虑。而12月份的会议则讨论原有及新增拨款计划在下年度的资源分配，以及协作研究金及卓越学科领域计划的拨款建议，并对主题研究计划的申请作初步考虑。

学科小组

研资局由2012/13年度开始设有两组学科小组成员在下列学科：

- 生物学及医学
- 商学
- 工程学
- 人文学及社会科学
- 自然科学

其中一组负责评审优配研究金、杰出青年学者计划及人文学及社会科学杰出学者计划等的申请建议书及监察获资助的项目。另一组负责评审及监察合作研究计划的申请建议书及项目。学科小组的成员为本地学者及非本地学者。

第一组别的学科小组一般于每年6月在研资局的会议举行前召开会议，主要目的是审批拨款申请，并监察进展中项目的进度，以及对已完成项目进行评核。

学科小组的成员及外部评审员负责审批研究金的申请，他们均为有关学科的海内外学者。学科小组在会议后向研资局提交建议，推荐那些项目应获得拨款。

Collaborative Research Fund Committee

The Collaborative Research Fund is provided to the institutions for the procurement of major research facilities and/or equipment or library collections which could not otherwise be afforded by one institution and which could be used for collaborative research or group research activities that operate across disciplines and/or normal institutional boundaries.

The Collaborative Research Fund Committee is charged with selecting proposals for funding support, as well as monitoring the funded projects.

Major Projects Steering Committee

The Major Projects Steering Committee was formed to oversee the Theme-based Research Scheme and the Areas of Excellence Scheme, the administration of the latter was transferred from the UGC to the RGC in February 2012. In respect of the Theme-based Research Scheme, the Committee reviews the grand challenge topics periodically and advises the RGC of any need to invite the Education Bureau to consider changes or additions. It also advises the RGC on the criteria for selecting Theme-based Research Scheme proposals and monitors the funded projects. The Theme-based Research Scheme Selection Panel under the Major Projects Steering Committee assists in implementing the shortlisting, assessment and monitoring of projects.

In respect of the Areas of Excellence Scheme, the Committee advises the RGC on the strategy and criteria for selecting potential areas of excellence, identifies and prioritizes such proposals for funding support, as well as monitors funded projects.

协作研究金委员会

协作研究金向院校提供资助，购置单一院校难以负担的大型研究设备、仪器及图书馆资料，以进行跨学科及／或跨院校而具合作性的集体研究工作。

协作研究金委员会负责评审申请建议书，并监察获资助项目的进度。

大型研究项目督导委员会

教资会于2012年2月把卓越学科领域计划转交研资局管理。连同主题研究计划，研资局成立大型研究项目督导委员会，监督该两项计划。在主题研究计划方面，督导委员会会定期检讨具挑战性的题目，并视乎需要，建议研资局请教育局考虑更改或增加题目。督导委员会亦会就甄选主题研究计划建议书的准则向研资局提供意见，以及监察获资助的项目。督导委员会辖下的主题研究计划遴选小组协助执行甄选、评核及监察各研究项目。

至于卓越学科领域计划，督导委员会会就甄选具发展潜质的卓越学科领域的策略和准则，向研资局提供意见，并挑选值得资助的建议和订出优先次序，以及监察获资助的项目。

Steering Committee on Competitive Research Funding for the Self-financing Degree Sector

The new Steering Committee on Competitive Research Funding for the Self-financing Degree Sector was established in October 2013 by the RGC to oversee the implementation details of the Faculty Development Scheme, the Institutional Development Scheme, and the Inter-Institutional Development Scheme, such as formation of assessment panel, application process and procedures, eligibility and assessment criteria, monitoring and assessment of approved projects, and bring forward recommendations for funding for consideration by the RGC.

Hong Kong PhD Fellowship Scheme Steering Committee

The Hong Kong PhD Fellowship Scheme Steering Committee was established to steer and oversee the implementation of the scheme. The Committee comprises the RGC Chairman, one RGC Member, and one member from each UGC-funded institution. This is to ensure that the scheme will run effectively and tie in with the recruitment exercises of the institutions.

Disciplinary Committee

The RGC set up the Disciplinary Committee in 2015 to handle alleged improprieties. The new mechanism aimed to enhance the efficiency of meetings by allowing the RGC to conduct more in-depth and impartial investigation into the alleged cases. It also helped maintain consistency and equity among Panels and Committees in imposing penalties for substantiated cases.

To observe impartiality and fairness in the investigation of alleged cases, the Committee comprises three non-RGC/Panel/Committee members and two non-local RGC or/and lay members who do not have any affiliations with the UGC-funded institutions and the case concerned.

Membership details of various RGC committees/panels for 2014/15 are in Appendix C.

自资学位界别竞逐研究资助督导委员会

研资局于2013年10月成立全新的自资学位界别竞逐研究资助督导委员会，负责督导教员发展计划、院校发展计划及跨院校发展计划推行的详情，例如组成评审委员会、申请手续及处理程序、申请人资格及评核准则、监察及评核受资助的项目，以及提交拨款建议，供研资局考虑。

香港博士研究生奖学金计划督导委员会

香港博士研究生奖学金计划督导委员会成立的目的在于督导和监察计划的推行。委员会由研资局主席、一名研资局成员及每间教资会资助院校有一名成员，以确保这项计划在配合院校的收生程序下得以顺利推行。

纪律委员会

研资局于2015年成立纪律委员会，以处理有关涉嫌不当行为的事宜。这项崭新的机制能让研资局就涉嫌不当行为的个案作更深入和公正的调查，从而提高会议的效率。这机制又能确保研资局在厘定各学科小组及委员会的违规个案的罚则时，保持一致性及公平性。

为确保调查工作能公正及公平地进行，纪律委员会由三名非研资局/学科小组/委员会成员和两名非本地成员和/或非学术界成员所组成。成员均不会与有关大学及个案有任何联系。

2014/15年度各研资局委员会/学科小组的成员名单详列于附录C。

Research Endowment Fund

Background of the Research Endowment Fund

In February 2009, a HK\$18 billion Research Endowment Fund was established. The UGC is responsible for advising on the policies governing the operation, development and investment of the fund. From the 2010/11 academic year onwards, the investment income of at least HK\$14 billion out of the total of HK\$18 billion is used to replace the bulk of the recurrent subvention from the Government allocated to the RGC, thus providing greater funding stability and certainty of funding to support institutions' research projects. In 2011/12, the Government secured the support of the Legislative Council to inject HK\$5 billion into the fund starting from 2012/13. Of that, the investment income of HK\$3 billion is for funding researches of local self-financing degree-awarding institutions on a competitive basis to enhance academic and research development. The investment income of the remaining HK\$2 billion replaces the recurrent provision of HK\$100 million to the RGC to provide stable research funding for the UGC-funded institutions.

Earmarked Research Grants

The investment income of HK\$16 billion of the Research Endowment Fund provides the source of funding to the Earmarked Research Grants to support research projects and research activities. It is the main form of funding for academic research in the eight UGC-funded institutions and is allocated on a competitive basis.

The Earmarked Research Grants complement the Block Grants from the UGC, part of which provide institutions with funds for research infrastructure and outlays such as researchers' salaries, laboratory costs and other expenses (e.g. accommodation and equipment) related to UGC or RGC-funded research.

In the 2014/15 academic year, the RGC allocated an amount of about HK\$890 million for the Earmarked Research Grants.

Theme-based Research Scheme

The income from up to HK\$4 billion of the Research Endowment Fund, around HK\$200 million per annum, is deployed to support the Theme-based Research Scheme involving themes of a more long-term nature and strategically beneficial to the development of Hong Kong. A Steering Committee for Research Themes was set up by the Government to advise on the selection of research themes.

研究基金

研究基金的背景

2009年2月，获拨款180亿港元的研究基金正式成立。教资会负责就监管基金运作、发展及投资方面的政策提供意见。由2010/11学年开始，总数180亿港元的基金中不少于140亿港元用作本金，当中所赚取的投资收益取代目前由政府拨予研资局的经常资助金的一大部分，为资助院校的研究项目提供更稳定明确的拨款。此外，在2011/12年度，政府得到立法会的支持，由2012/13年度起向研究基金注资50亿港元。当中30亿港元的投资收益用以资助颁授本地自资学位的院校，透过竞逐研究拨款，推动其学术和研究发展。其余20亿港元为教资会资助院校提供稳定的经费来源，其投资收入会取代每年拨给研资局的一亿元经常拨款。

研究用途补助金

研究用途补助金的资金来自160亿港元研究基金的投资收益，用以资助研究项目及活动。研究用途补助金是本地八所受教资会资助院校进行学术研究的主要资金来源，并会以竞逐形式决定拨款水平。

研究用途补助金与教资会向各院校提供的整体补助金相辅相成。部份整体补助金可用作支付研究基础设施、研究人员的薪酬、实验室开支，以及教资会及研资局资助的其他研究项目的一般费用（例如办公室地方及设备）。

于2014/15学年，经研资局所分配的研究用途补助金总额约为8.90亿港元。

主题研究计划

从研究基金不多于40亿港元本金赚取的约每年2亿港元的投资收益，用作资助主题研究计划，以进行较长期及策略上有利于香港发展的主题研究。政府成立了一个督导委员会就挑选研究主题事宜向政府提供意见。

Competitive Research Funding Schemes for Local Self-financing Degree Sector

The investment income of HK\$3 billion of the Research Endowment Fund, around HK\$150 million per annum, is designated to support the academic and research development of local self-financing degree sector on a competitive basis, through the Faculty Development Scheme, the Institutional Development Scheme and the Inter-Institutional Development Scheme.

UGC Funds

Areas of Excellence Scheme

The Areas of Excellence Scheme was launched by the UGC in 1998 to enable the UGC-funded institutions to build upon their existing strengths and develop them into areas of excellence. The administration of the scheme was transferred to the RGC in February 2012, while the funding of around HK\$80 million per annum continued to come from the UGC.

Hong Kong PhD Fellowship Scheme

Established in 2009 by the RGC, the Hong Kong PhD Fellowship Scheme aims at attracting the best and brightest students in the world to pursue their PhD programmes in Hong Kong's UGC-funded institutions.

The Fellowship provides a monthly stipend of HK\$20,000 (approximately US\$2,600) and a conference and research related travel allowance of HK\$10,000 (approximately US\$1,300) per year for the awardees for a period of three years.

本地自资学位界别竞逐研究资助计划

政府指定研究基金中30亿港元须以竞逐形式资助本地自资学位界别的学术及研究发展，每年的投资收益约为1.5亿港元，用以资助教员发展计划、院校发展计划及跨院校发展计划。

教资会拨款

卓越学科领域计划

教资会于1998年推出卓越学科领域计划，旨在巩固及发挥香港在研究方面的现有优势，并使其发展为卓越学科领域。由2012年2月起，计划由教资会交予研资局负责管理。教资会继续为计划提供拨款，每年约8千万港元。

香港博士研究生奖学金计划

研资局于2009年成立香港博士研究生奖学金计划。此项计划旨在吸引世界各地优秀的研究生，来港在教资会资助院校修读以研究为本的博士学位课程。

奖学金将为获奖的博士研究生提供每月港币2万元(约2,600美元)的津贴，以及每年港币1万元(约1,300美元)的会议及研究活动交通津贴，为期三年。

Research Funding Schemes and RGC Activities

研究资助计划及研资局的工作

RGC Activities funded by Research Endowment Fund

研资局由研究基金资助的工作总览

HIGHLIGHTS

提要

In the 2014/15 academic year, the total funding available for the Earmarked Research Grants was about HK\$890 million.

2014/15 学年研究用途补助金总额约为 8.90 亿港元。

Allocation of the Earmarked Research Grants: 2014/15 Academic Year

2014/15 学年研究用途补助金的分配

How the Earmarked Research Grants were Allocated

研究用途补助金的具体分配

The bulk of Earmarked Research Grants funding was allocated by the RGC in response to competitive bids received from the institutions. Funding was budgeted for six broad categories as follows:

研资局研究用途补助金主要透过竞争形式拨予各院校成功申请资助计划的研究项目。研究用途补助金拨款预算主要分为六大类别：

- HK\$617 million in response to competitive bids received under the annual General Research Fund exercise. To cater for special research needs in specific areas, funding has been earmarked to support special needs under the General Research Fund:
 - “Clinical Research Fellowship” to support the young medical fellows conducting clinical research.
 - “Employment of Relief Teacher under the Humanities and Social Sciences Disciplines” to free up the Principal Investigator’s staff time for personal research and writing.
 - “Provision of Research Experience for Undergraduate Students” to provide undergraduate students with opportunities of working with researchers of the General Research Fund projects and gaining research experience.
- 6.17 亿港元拨予成功申请本年度的优配研究金的项目。为应付某些范畴在研究上的特别需要，优配研究金计划设立指定用途的款项，以资助有关的需要：
 - 为支持年轻临床医学人员进行临床医学研究而设的「临床医学研究资助计划」。
 - 「聘请替假教师安排」专为人文学及社会科学的研究项目而设，其目的是提供特别资助让首席研究员聘请替假教师代替其教学工作，以腾出工作时间从事研究及写作。
 - 「本科生研究津贴」为本科生提供机会与获优配研究金资助的项目研究人员共同工作，让他们汲取研究经验。

- HK\$101 million reserved for the Early Career Scheme to support and nurture junior new academics with a view to attracting the best junior faculty academics to strengthening the teaching-research nexus.
- HK\$110 million reserved for the Collaborative Research Fund to strengthen the research base, and support group research proposals that promote academic collaboration among institutions and synergy between research teams.
- HK\$51 million reserved for the Joint Research Schemes established with other regions.
- HK\$10 million reserved for the Humanities and Social Sciences Prestigious Fellowship Scheme to enhance support to research in disciplines under the Humanities and Social Sciences Panel.
- HK\$1.20 million for the Research Postgraduate Students Conference/Seminar Grants to support inter-institutional and inter-disciplinary exchanges among postgraduates and to provide opportunities for them to meet and interact with overseas scholars.
- 1.01 亿港元拨作杰出青年学者计划，用于支持及培育资历较浅的青年学者，以吸引最杰出的青年学者加强发展教学与研究之间的联系。
- 1.10 亿港元拨作协作研究金，用于巩固研究基础，以及资助由不同院校及研究队伍共同参与的集体合作研究项目，以鼓励院校在学术上的合作及发挥协同精神。
- 5,100 万港元拨款，供与其他地区合办的合作研究计划之用。
- 1,000 万港元拨作人文学及社会科学杰出学者计划，为人文学及社会科学学科的学者提供更佳支援。
- 120 万港元拨作支持研究生进行跨院校及跨学科的交流互动，以及与海外学者会面及交流。

There were subsequently some slight variations in terms of the actual allocation.

在实际拨款时，分配的款额或有些微差异。

HIGHLIGHTS 提要

In the 2014/15 academic year, the total General Research Fund allocation was HK\$595 million supporting 972 projects. As at 31 March 2015, the number of on-going projects is 4 736.

在 2014/15 学年，优配研究金拨款总额达 5.95 亿港元，资助研究项目达 972 个。截至 2015 年 3 月 31 日，4 736 个资助研究项目仍在进行中。

General Research Fund

Altogether, 2 661 proposals across a wide range of subject disciplines were received under the General Research Fund exercise, seeking grants totaling HK\$2.82 billion. Initially the bids were examined by the relevant Subject Panels, with help from external reviewers.

Following rigorous peer review via the RGC's international network of external reviewers, on advice from the Subject Panels, the RGC approved allocating an amount of HK\$595 million to support 972 projects with an average grant of about HK\$0.61 million in the 2014/15 academic year. The overall success rate is 37%.

Allocation of the General Research Fund for the 2014/15 academic year by broad subject category is summarised in Chart 3.1.

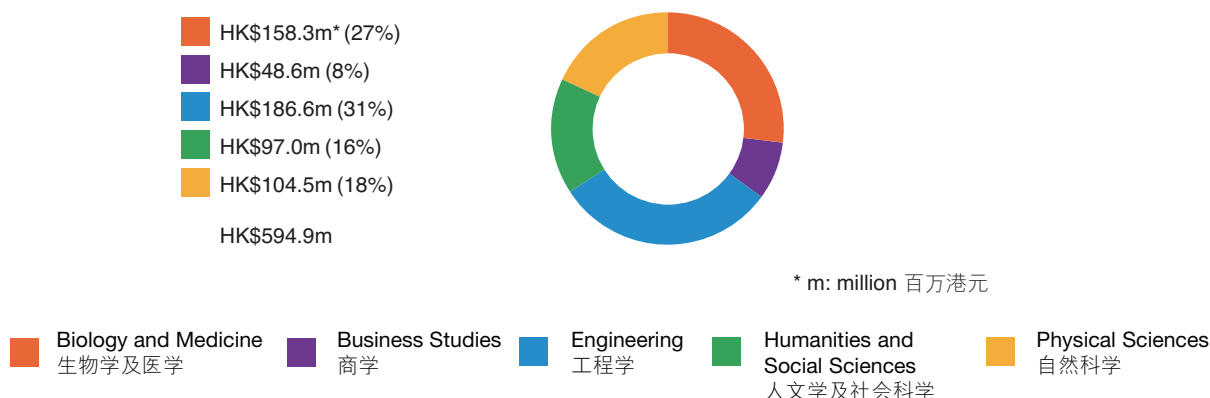
优配研究金

是年度向研资局申请优配研究金的研究项目共 2 661 个，研究范围广泛，申请金额达 28.2 亿港元。申请先由外部评审员评审，再由有关的学科小组作出初步审阅。

经国际外部评审员严格审核后，研资局根据学科小组的意见，于 2014/15 学年拨出 5.95 亿港元予 972 个研究项目，平均每个项目约获拨款 61 万港元，整体成功率为 37%。

表 3.1 列出 2014/15 学年各学科所获优配研究金的分配。

Chart 3.1: Allocation of the General Research Fund by Broad Subject Category in the 2014/15 Academic Year
表 3.1 : 2014/15 学年各学科所获优配研究金的分配



Note: Figures may not add up to the total due to rounding.

注：由于进位原因，合计之数未必等于全部数字的总和。

- **Clinical Research Fellowship**

The RGC awarded research fellowship to support young clinicians in undertaking clinical research. The scheme has been implemented in close partnership with the two local institutions which offer medical training (i.e. The Chinese University of Hong Kong and The University of Hong Kong) and is part of the overall efforts to create more opportunities for promising clinicians to be exposed to and to engage in clinical research.

Under the scheme, a supported fellow would be awarded an annual grant equally contributed by the RGC and the hosting institution for up to three years to undertake and complete a clinical research project. The amount of fellowship award for each application is capped at HK\$1.2 million per year and the actual fellowship to be funded per year is the sum of the annual salary and annual cash allowance of the applicant or a maximum of HK\$1.2 million, whichever is the less.

- **Employment of Relief Teacher under the Humanities and Social Sciences Disciplines**

The objective of this funding support is to address the special needs of the Humanities and Social Sciences academics. The humanities and social sciences projects normally require employment of relief teachers to free up the Principal Investigators' staff time for personal research and writing, rather than funding for research assistants and research infrastructure (e.g. equipment). The duration of employment of relief teachers normally ranges from four to a maximum of 12 months for a typical 24 to 36-month project.

- **Provision of Research Experience for Undergraduate Students**

This scheme is to provide undergraduate students with opportunities of working with researchers of the General Research Fund projects and gaining research experience. Principal Investigators can include the provision of a monthly allowance of up to HK\$2,500 to an undergraduate student helper for a maximum period of ten months for each General Research Fund application. The institutions have agreed to provide the same amount of allowance to the students as the RGC on a matching basis so as to allow more students to be benefited from the scheme.

- **临床医学研究资助计划**

研资局在优配研究金中，提供研究奖助金，以支持年轻临床医学人员进行临床医学研究。该计划乃与香港中文大学及香港大学两家提供医疗训练的本地大学紧密合作推行，致力为具潜质的临床医学人员提供更多机会，以参与及从事临床医学的研究。

此计划让获资助者每年获得由研资局及所属大学提供相等份额的拨款，最多资助三年，以从事及完成临床医学研究计划。此计划的资助金额上限为120万港元一年，而每年的实际资助金额为申请人年薪及每年所获现金津贴之总和或最多120万港元，以较少金额为准。

- **人文学及社会科学学科的聘用替假教师安排**

此计划设立的目的是为照顾人文学及社会科学学者的特别需要。这些学科的研究项目多涉及个人研究或撰写工作，需要首席研究员腾出工作时间来进行，并非可以聘用研究助理或购置研究设施来完成，故需聘请替假教师代替其教学工作，以腾出时间从事研究及写作。一般而言，24至36个月的研究项目可申请聘用四个月至最多12个月的替假教师。

- **本科生研究津贴**

此计划为本科生提供与优配研究金获资助研究项目的研究人员一同工作的机会，让他们汲取研究经验。首席研究员可于申请建议书中申请为本科生提供为期最多十个月，每月2,500港元的津贴。院校亦已同意提供与研资局相等份额的拨款，令更多的本科生受惠。

HIGHLIGHTS 提要

In the 2014/15 academic year, the total Early Career Scheme allocation approved was HK\$94 million supporting 154 projects. As at 31 March 2015, the number of on-going projects is 430.

在 2014/15 学年，杰出青年学者计划拨款总额约 9,400 万港元，资助研究项目达 154 个。截至 2015 年 3 月 31 日，430 个资助研究项目仍在进行中。

Early Career Scheme

The Early Career Scheme aims at nurturing new junior faculty members.

A total of 359 proposals were received under the Early Career Scheme, seeking grants totaling HK\$304 million. Like the bids for the General Research Fund, the bids were examined by the relevant Subject Panels, with the help from external reviewers.

Following the rigorous peer review via the RGC's international network of external reviewers, on advice from the Subject Panels, the RGC awarded an amount of HK\$94 million to support 154 projects with an average grant of about HK\$0.61 million in the 2014/15 academic year. The overall success rate is 43%.

Allocation of the Early Career Scheme for the 2014/15 academic year by broad subject category is summarised in Chart 3.2.

杰出青年学者计划

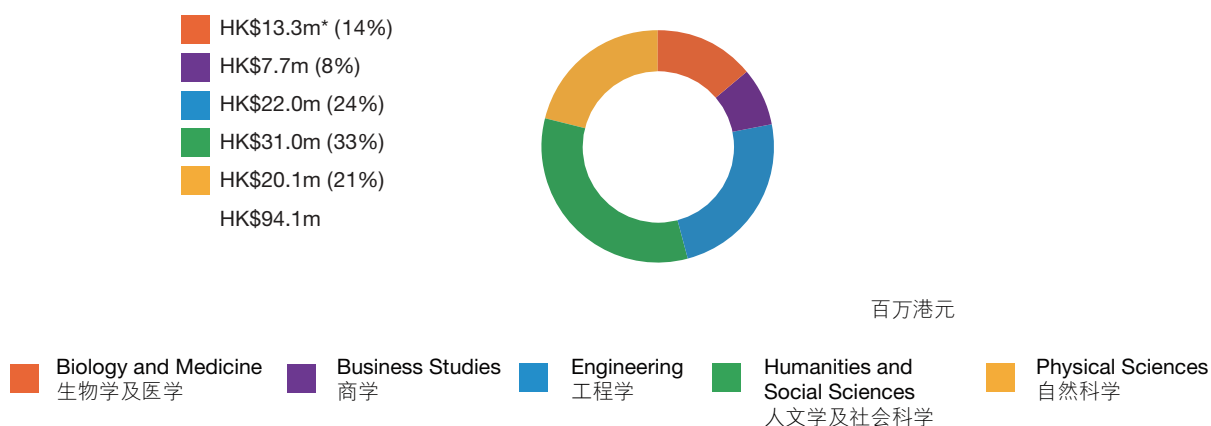
杰出青年学者计划的目的在于培育资历较浅的青年学者。

杰出青年学者计划接获研究项目申请共 359 个，申请金额达 3.04 亿港元。申请先由外部评审员评审，再由有关的学科小组作出审阅。

经国际外部评审员严格审核后，研资局根据学科小组的意见，于 2014/15 学年拨出 9,400 万港元予 154 个研究项目，平均每个项目约获拨款 61 万港元。整体成功率为 43%。

表 3.2 列出 2014/15 学年各学科所获杰出青年学者计划的分配。

Chart 3.2: Allocation of the Early Career Scheme by Broad Subject Category in the 2014/15 Academic Year
表 3.2 : 2014/15 学年各学科所获杰出青年学者计划的分配



HIGHLIGHTS 提要

In the 2014/15 academic year, the total Collaborative Research Fund allocation was HK\$165.06 million supporting 30 projects (including 12 Equipment Grant projects supported by the one-off HK\$60 million allocation from the UGC). As at 31 March 2015, the number of on-going projects is 76.

在2014/15学年，协作研究金拨款总额为1.65亿港元，资助研究项目达30个（其中包括由教资会一次性拨款6,000万港元所资助的12项器材装备补助金申请）。截至2015年3月31日，76个资助研究项目仍在进行中。

Collaborative Research Fund

The Collaborative Research Fund (CRF) is provided to the UGC-funded institutions for the procurement of major research facilities and/or equipment or library collections to support collaborative research, or group research activities that operate across disciplines and/or normal institutional boundaries.

Starting from the 2014/15 exercise, the quota for proposal applications per institution has been lifted and a two-stage application process consisting of submission of preliminary and full proposals has been adopted. The RGC received a total of 155 preliminary proposals, consisting of 25 equipment bids and 130 group research applications in the 2014/15 academic year, seeking grants totally HK\$113.12 million and HK\$931.21 million respectively.

After a peer review process and interviews of selected researchers by the Collaborative Research Fund Committee (CRFC), 30 full proposals were eventually funded at a total amount of HK\$165.06 million.

From the 2008/09 academic year onwards, the RGC holds an annual CRF Symposium for on-going funded projects to facilitate exchange of views among the CRFC members, research teams and researchers from various institutions.

The 2014 Symposium was held in December 2014 at the City University of Hong Kong. Twelve on-going projects funded in the 2012/13 academic year were presented in the Symposium.

协作研究金

协作研究金向院校合作的研究项目提供资助，购置主要的研究设备、仪器或图书馆资料以进行协作研究，或让院校进行跨学科及／或跨院校的集体研究。

由2014/15年度开始，研资局取消了每间院校可提交协作研究金计划申请的限额，并采用了两个阶段的申请程序，包括提交初步及正式研究计划书。研资局于2014/15学年共接获25份购置器材的申请及130项资助集体合作研究的申请，申请资助额分别为1.13亿港元及9.31亿港元。

经过学者评审及协作研究金委员会与个别研究人员会面后，本局落实资助其中30项申请，资助总额为1.65亿港元。

由2008/09学年起，研资局为进行中的研究项目举办周年协作研究金研讨会，以促进协作研究金委员会委员与研究队伍及不同院校的研究人员的交流。

2014年度协作研究金研讨会已于2014年12月假香港城市大学举行。在是次研讨会中，发布了12个于2012/13学年获资助的研究项目的中期成果。

HIGHLIGHTS

提要

In the 2014/15 academic year, the RGC provided HK\$38.72 million for the Joint Research Schemes with five regions supporting 69 collaborative projects and exchange fellowships. As at 31 March 2015, the number of on-going projects is 249.

在2014/15学年，研资局与五个地区分别合办的合作研究计划拨款总额3,872万港元，共资助69个研究合作项目及交流计划。截至2015年3月31日，249个资助研究项目仍在进行中。

Joint Research Schemes

Project Grants

- **National Natural Science Foundation of China/ Research Grants Council Joint Research Scheme**

The National Natural Science Foundation of China/RGC Joint Research Scheme was launched in November 1998. The scheme aims to promote collaboration in research between researchers/research teams in Hong Kong and their counterparts in Mainland China, in areas of common interest to complement each other's strengths. There are six focus areas:

- Information Technology
- Life Science
- Management Science
- Marine and Environmental Science
- Medicine
- New Materials Science

The scheme provides funding to support actual expenses, inclusive of passage and subsistence. In the 2014/15 academic year, a total of 226 initial proposals were received, seeking a total of HK\$237 million of RGC grants. After shortlisting, and in consultation with the National Natural Science Foundation of China, 60 proposals were selected for submission of formal applications.

Following a peer review process and detailed discussions by the Joint Selection Committee comprising experts from both the National Natural Science Foundation of China and the RGC, 22 proposals were finally selected for funding support. The RGC and the National Natural Science Foundation of China allocated HK\$23.25 million and RMB19.80 million to the scheme respectively.

合作研究计划

项目补助金

- **国家自然科学基金委员会及香港研资局联合科研资助基金**

研资局与国家自然科学基金委员会于1998年11月成立联合科研资助基金。此计划旨在促进香港与内地的研究人员或队伍在双方具有共同兴趣的范围上展开合作研究，以收相辅相成之效。资助的合作范畴为以下六个重点领域：

- 信息科学
- 生物科学
- 管理科学
- 海洋与环境科学
- 医学科学
- 新材料科学

此计划不仅资助研究人员的交通及生活费，更拨款支持研究的实际开支。计划于2014/15学年内共收到226份初步申请，申请金额约2.37亿港元。经研资局与国家自然科学基金委员会的甄选，60个项目获选可提交正式申请。

申请均经由学者评审，并经过国家自然科学基金委员会与研资局共同组成的联合甄选委员会详细讨论，最后对22个申请项目提供资助。研资局与国家自然科学基金委员会为联合科研资助基金分别投放了2,325万港元及1,980万元人民币。

- **The French National Research Agency/Research Grants Council Joint Research Scheme**

Launched in the 2012/13 academic year, this scheme aims to further strengthen the collaboration between French and Hong Kong research communities in areas of mutual interest.

A total of 63 initial proposals were received in the 2014/15 exercise, seeking total RGC grants of HK\$146.97 million. After shortlisting, and in consultation with the French National Research Agency, 16 proposals were selected for submission of formal applications. Following a peer review process and rigorous selection by the experts from the French National Research Agency and the RGC, five proposals were selected for funding support with total RGC grants of HK\$11 million.

- **Scottish Funding Council/Research Grants Council Joint Research Scheme**

Launched in the 2014/15 academic year, this scheme aims to promote and support collaboration between scientists in the Scotland and Hong Kong. Proposals in the fields of Life Sciences and Energy will be invited under the scheme.

In the 2014/15 exercise, a total of 35 applications were received, seeking total grants of HK\$4.35 million. Following the rigorous selection by experts from the Scottish Funding Council and the RGC, 13 applications were selected for funding support, with total RGC grants of HK\$1.57 million.

- **法国国家科研署与研资局合作研究计划**

本计划于2012/13 学年推出，旨在进一步加强两地科研人员就共同兴趣的领域上的合作。

2014/15 年度，本计划共收到 63 份初步申请，申请金额约 1.47 亿港元。经研资局与法国国家科研署的甄选，16 个项目获选可提交正式申请。经学者评审及研资局与法国国家科研署的严格甄选，选出五份申请批予资助。研资局合共批出 1,100 万港元。

- **苏格兰拨款委员会与研资局合作研究计划**

本计划于2014/15 学年推出，旨在推广及支持苏格兰与香港两地科研人员之间的合作研究。本计划接受生命科学和能源两个领域的研究项目申请。

2014/15 年度，本计划共收到 35 份申请，申请金额约 435 万港元。经研资局与苏格兰拨款委员会学者的严格甄选，选出 13 份申请予以资助。研资局合共批出约 157 万港元。

Travel/Conference Grants

- **Germany/Hong Kong Joint Research Scheme**

In the 1996/97 academic year, in collaboration with the German Academic Exchange Service (DAAD), the RGC launched a joint research scheme to encourage collaborative research between scholars in Germany and Hong Kong.

The grants provide researchers with passage and a subsistence allowance for a maximum period of two years enabling them to visit their counterparts to discuss or conduct research. The scheme is operated on an annual basis.

In the 2014/15 academic year, 34 applications covering a wide range of subjects were received, seeking about HK\$2.38 million of RGC grants. Experts from both Hong Kong and Germany jointly selected 13 research proposals for about HK\$1.03 million RGC grants.

- **PROCORE – France/Hong Kong Joint Research Scheme**

In 1998, the RGC and the French Consulate in Hong Kong agreed to launch a joint research scheme to encourage and promote scientific collaboration between France and Hong Kong by providing grants for researchers to make exchange visits.

In the 2014/15 academic year, a total of 49 applications were received. Among these applications, 43 were travel grant requests and six were conference/workshop grants applications. The total amount of RGC grants sought was about HK\$3.42 million.

Of these, ten applications including nine travel grants and one conference/workshop grant were approved, with about HK\$0.70 million RGC grants awarded.

旅费／会议补助金

- **德国与香港合作研究计划**

1996/97 学年，研资局与德国学术交流协进会合作，推出合作研究计划，促进两地学者合作进行研究。

拨款用于支付研究人员为期最多两年的交通及生活津贴，让两地的研究人员携手合作，商讨及进行研究。此计划每年进行一次遴选。

在 2014/15 学年，双方共接获的申请有 34 份，涵盖学科甚为广泛，申请金额约 238 万港元。本港及德国的学者最终共同选出 13 份申请予以资助，研资局给予的资助金额约 103 万港元。

- **法国与香港合作研究计划**

1998 年，研资局与法国驻港领事馆协议合办此项合作研究计划，资助研究人员互访交流，藉以鼓励及促进两地合作进行科学研究。

2014/15 学年，双方共接获 49 份申请，其中 43 份是旅费补助金申请，其余六份是会议／工作坊补助金申请。申请金额约 342 万港元。

在上述申请中，共有十份申请获得拨款，其中九份是旅费补助金申请，一份是会议／工作坊补助金申请，研资局批出的资助金额约 70 万港元。

Fellowships

- **Fulbright-RGC Hong Kong Senior Research Scholar/Research Scholar Award Programmes**

Since 2002/03 academic year, the RGC has collaborated with the US Consulate-General in Hong Kong in launching the Fulbright – RGC Hong Kong Senior Research Scholar Award Programme (Senior Programme) to support Hong Kong scholars to undertake research work in the United States. The programme awards fellowships, each at a maximum of HK\$0.35 million for up to ten months in each year. A supplementary grant of up to HK\$0.15 million per application may be provided to meet research expenses in justified cases. In the 2014/15 exercise, this Senior Programme attracted eight applications. Two local scholars were finally supported with roughly HK\$0.8 million.

In addition, the Fulbright-RGC Hong Kong Research Scholar Award Programme (Junior Programme) was first launched in the 2006/07 academic year. The programme provides sponsorship of up to HK\$0.12 million for ten months to local PhD students. In the 2014/15 academic year, 50 applications were received. Four local PhD students were supported with about HK\$0.37 million RGC grants.

- **Hong Kong-Scotland Partners in Post Doctoral Research**

In collaboration with the Scottish Government, the RGC launched this scheme in the 2012/13 academic year to support Hong Kong post-doctoral fellows to spend six to 12 months in a Scottish university or research institution for conducting research activities in four specified areas. Similarly, the Scottish Government provides support to Scottish post-doctoral fellows to conduct research works in the UGC-funded institutions. The aim of this scheme is to foster academic links between Scotland and Hong Kong enabling experienced researchers to conduct cutting edge research in each other's country.

The RGC allocated HK\$0.45 million in the past two rounds of exercise to support a total of six awards. Upon the completion of the review conducted by the Scottish Government in the 2014/15 academic year, the new exercise will be launched in the 2015/16 academic year.

研究奖助金

- **富布莱特－研资局香港学人／青年学人计划**

由2002/03学年开始，研资局与香港美国总领事馆合作，推出富布莱特－研资局香港学人计划，资助香港学者前赴美国进行研究工作。在此计划下，每位学者可获最高35万港元的资助，进行每年为期最多十个月的交流。如有需要，每名申请者最高可获15万港元额外津贴，作为支付研究开支之用。此计划在2014/15学年收到八份申请，最后以约80万港元资助了两位本地学者。

此外，富布莱特－研资局香港青年学人计划于2006/07学年推出。在这项计划下，每位本地研究生可获最高12万港元进行为期最多十个月的交流。在2014/15学年收到合共50份申请，当中有四位本地研究生获研资局资助共约37万港元。

- **香港与苏格兰合作博士后研究计划**

研资局与苏格兰政府合作，于2012/13学年起推出此计划，以资助香港博士后研究员前赴苏格兰的大学或研究机构就四个特定范畴作为期六至12个月的研究。同样地，苏格兰政府会资助苏格兰博士后研究员到教资会资助院校进行研究。此计划旨在促进苏格兰与香港的学术交流，并让具经验的研究员在彼邦进行先进的研究。

研资局于过去两轮的计划合共拨出45万港元，以资助六名申请人。待苏格兰政府于2014/15学年就本计划进行检讨后，本计划将于2015/16学年接受新申请。

HIGHLIGHTS 提要

In the 2014/15 academic year, an amount of HK\$5.26 million was awarded to support seven prestigious investigators under the Humanities and Social Sciences Prestigious Fellowship Scheme. As at 31 March 2015, the number of on-going projects is 21.

在2014/15学年，人文学及社会科学杰出学者计划拨出526万港元资助七名杰出学者。截至2015年3月31日，21个资助研究项目仍在进行中。

Humanities and Social Sciences Prestigious Fellowship Scheme

The Humanities and Social Sciences Prestigious Fellowship Scheme was implemented to enhance support to research in disciplines under the Humanities and Social Sciences Panel. The fellowship not only provides resources for the employment of relief teachers, but also cost of travel, subsistence and dissemination of outputs.

After rigorous peer review via the RGC's international network of external reviewers, on the advice of the Selection Committee, the RGC awarded an amount of HK\$5.26 million to support seven prestigious investigators with an average fellowship of about HK\$0.75 million in the 2014/15 academic year. The overall success rate is 41%.

人文学及社会科学杰出学者计划

人文学及社会科学杰出学者计划的目的是为人文学及社会科学学科的学者提供更佳支援。计划不单提供资源聘请替假老师，还包括旅费、生活津贴及发表研究结果的费用。

经国际外部评审员严格的审核后，研资局根据遴选委员会的意见，于2014/15学年拨出526万港元资助七名杰出学者，平均每名约75万港元。整体成功率为41%。

HIGHLIGHTS 提要

In the 2014/15 academic year, the RGC provided HK\$0.85 million for the Research Postgraduate Students Conference/Seminar Grants supporting 18 conferences/seminars.

在2014/15学年，研究生会议／研讨会补助金拨款额85万港元，资助18个会议／研讨会。

Research Postgraduate Students Conference/Seminar Grants

The grant is provided to support and promote inter-institutional and inter-disciplinary exchanges among postgraduate students of the UGC-funded institutions, and to provide opportunities for postgraduate students of these institutions to meet and interact with eminent scholars from outside Hong Kong.

Specifically, the scheme aims to facilitate the organisation of locally held inter-institutional conferences/seminars targeted at postgraduate students.

The grant is given in the form of travel grants to cover the travel and associated costs of inviting visiting scholars to attend and speak at conferences/seminars in Hong Kong.

Applications are received all year round. Grants are given subject to the availability of funds set aside by the RGC.

In the 2014/15 academic year, the RGC approved 18 applications with a total funding of HK\$0.85 million.

研究生会议／研讨会补助金

是项补助金是为支持及促进受教资会资助院校的研究生进行跨院校及跨学科交流而设，亦资助研究生与海外的卓越学者会面及交流。

是项计划旨在资助于本地举行，并以研究生为对象的跨院校会议及研讨会。

补助金以补助旅费的形式发放，用以支付邀请学者来港出席会议／研讨会及发表演说所需的旅费及有关开支。

此项补助金全年接受申请，批核与否则视乎研资局的预留拨款金额是否有余而定。

于2014/15学年，研资局批准了18项申请，资助总额为85万港元。

HIGHLIGHTS 提要

In the 2014/15 academic year, the Theme-based Research Scheme allocated HK\$205 million to support four projects. As at 31 March 2015, the number of on-going projects is 18.

在2014/15学年，主题研究计划拨款总额达2.05亿港元，资助共四个研究项目。截至2015年3月31日，18个资助研究项目仍在进行中。

Theme-based Research Scheme

The objective of the Theme-based Research Scheme (TRS) is to focus academic research efforts of the UGC-funded institutions on themes of strategic importance to the long-term development of Hong Kong.

The Steering Committee for Research Themes was set up by the Government to advise on the selection of research themes. Following a consultation exercise, the Government identified the following three themes:

- (a) Promoting Good Health;
- (b) Developing a Sustainable Environment; and
- (c) Enhancing Hong Kong's Strategic Position as a Regional and International Business Centre.

Under these three themes, 11 grand challenge topics have been identified by the RGC in consultation with the academic community and endorsed by the Government.

Annual review is conducted to broaden/clarify the existing topics after consulting the institutions and obtaining endorsement of the Education Bureau.

The funding ceiling under this scheme is HK\$75 million per project for up to five years.

The fourth round exercise was held in the 2014/15 academic year. A total of 37 preliminary proposals were received, seeking RGC grants of HK\$2.56 billion. After the preliminary selection and a vigorous process of peer-review, the RGC allocated HK\$205 million to support four projects.

主题研究计划

主题研究计划的目的是集中教资会资助院校的学术研究力量，对香港长远发展具策略重要性的主题进行研究。

政府成立了研究主题督导委员会，就挑选研究主题事宜向政府提供意见。经征询意见后，政府订定下列三个特选主题：

- (一) 促进健康；
- (二) 建设可持续发展的环境；及
- (三) 加强香港作为地区及国际商业中心的策略性地位。

就上述三个特选主题，研资局在咨询学术界后，选出11个具挑战性的题目，并获政府通过。

研资局每年均会透过咨询院校及经教育局批准后，修订具挑战性的题目，以扩阔及阐明相关的范围。

每项主题研究计划年期最长为五年，每项申请的资助上限为7,500万港元。

第四轮计划于2014/15学年举行。研资局共收到37份初步研究计划书，申请金额约25.60亿港元。经过初步筛选及严格专家评审后，研资局拨款约2.05亿港元，资助共四个研究项目。

HIGHLIGHTS

提要

In the 2014/15 academic year, the RGC provided about HK\$101 million for the three funding schemes for the local self-financing sector supporting 63 research projects. As at 31 March 2015, the number of on-going projects is 62.
在2014/15学年，研资局就三项供本地自资学位界别竞逐的研究资助计划拨款总额约1.01亿港元，共资助63个研究合作项目。截至2015年3月31日，62个资助研究项目仍在进行中。

Competitive Research Funding Schemes for the Local Self-financing Degree Sector

The RGC launched the three new research funding schemes for the local self-financing degree sector, namely the Faculty Development Scheme, the Institutional Development Scheme and the Inter-Institutional Development Scheme were launched in 2013. The three funding schemes were formulated after a series of extensive consultation with different stakeholders and thorough consideration by the former Working Group on Competitive Research Funding for the Local Self-financing Degree Sector, the Steering Committee on Competitive Research Funding for the Self-financing Degree Sector and the RGC.

The three funding schemes are funded by the investment income of HK\$3 billion in the Research Endowment Fund, which will be around HK\$150 million per year.

The results of the first round exercise were announced in August 2014. Following the completion of the first round exercise and the Phase Two Consultation, five more institutions were included in the second round exercise in December 2014 on top of the seven local self-financing degree-awarding institutions in the first round exercise. The twelve institutions which were eligible for the three funding schemes were: Caritas Institute of Higher Education, Centennial College, Chu Hai College of Higher Education, Hang Seng Management College, Hong Kong Shue Yan University, The Open University of Hong Kong, Tung Wah College, Hong Kong CT Institute of Higher Education, Hong Kong Nang Yan College of Higher Education, Hong Kong Baptist University-School of Continuing Education, The Hong Kong Polytechnic University-School of Professional Education and Executive Development, and Technological and Higher Education Institute (THEi) of Hong Kong. The results of the second round exercise will be issued in August 2015.

供本地自资学位界别竞逐的研究资助计划

研资局于2013为本地自资学位界别推出三项新的研究资助计划，名为教员发展计划、院校发展计划及跨院校发展计划。在向不同持份者进行一连串广泛咨询，并经前工作小组、自资学位界别竞逐研究资助督导委员会及研资局作详细考虑后，研资局制订了这三项资助计划。

三项资助计划的拨款，源自研究基金中的30亿港元的投资收益，每年约有1.5亿港元。

第一轮计划申请拨款结果于2014年8月公布。随着第一轮计划申请和第二期咨询计划的结束，在参与首轮计划的七所颁授本地自资学位课程的院校外，再有五所以自资形式提供经本地评审本地学位课程的院校参与2014年12月的第二轮计划申请。十二所符合参与上述三项资助计划的院校为：明爱专上学院、明德学院、珠海学院、恒生管理学院、香港树仁大学、香港公开大学、东华学院、港专学院、香港能仁专上学院、香港浸会大学一持续教育学院、香港理工大学一专业进修学院及职业训练局一香港高等科技教育学院。第二轮计划申请拨款结果将于2015年8月公布。

Faculty Development Scheme (FDS)

The Faculty Development Scheme aims at developing the research capability of individual academics in the institutions so that they can transfer their research experiences and new knowledge into teaching and learning. In the 2014/15 exercise, HK\$30.3 million was granted to 51 research projects out of 217 applications.

Institutional Development Scheme (IDS)

The Institutional Development Scheme aims at building up the research capacity of the institutions in their strategic areas, involving physical research facilities and infrastructure supports. Of the 16 proposals received in the 2014/15 exercise, six projects were supported with a total grants of HK\$ 2.5 million.

Inter-Institutional Development Scheme (IIDS)

The Inter-Institutional Development Scheme aims at enhancing academics' research capability in the institutions and keeping them abreast of new developments, and challenging research topics in relevant fields through organising workshops, seminars or short courses by an institution or jointly between institutions. In the 2014/15 exercise, seven applications were received and six of them were awarded HK\$ 67.9 million.

教员发展计划

教员发展计划旨在帮助院校的个别教学人员发展研究能力，使他们能将研究经验和新知识转移至教与学。2014/15年度，本计划共收到217份申请，其中51份研究计划获得资助，总额为3,030万港元。

院校发展计划

院校发展计划目标在建立各院校在其策略发展范畴的研究能力，包括具体研究设施及支援研究的基建项目。2014/15年度共收到16份申请，最后共批出250万港元资助六份计划。

跨院校发展计划

跨院校发展计划则旨在为本地教学人员提升研究能力，透过个别院校筹组或其他院校合办的工作坊、讲座和短期课程，使他们在各自的专研范畴涉猎最新的发展和充满挑战的研究专题。2014/15年度共收到七份申请，合共批出6,790万港元资助六份计划。

RGC Activities funded by UGC Funds 研资局由教资会拨款的工作总览

HIGHLIGHTS 提要

In the 2014/15 academic year, the Hong Kong PhD Fellowship Scheme awarded 223 top students from 38 countries/regions.

在2014/15学年，香港博士研究生奖学金计划颁发奖学金予来自全球38个国家及地区共223位优秀学生。

Hong Kong PhD Fellowship Scheme

The Hong Kong PhD Fellowship Scheme was launched in September 2009 to attract the best and brightest students in the world, irrespective of their country of origin, prior work experience and ethnic background, to pursue their PhD studies and research in the UGC-funded institutions.

In the fifth round exercise, 223 top students from 38 countries/regions received the award. By the deadline in December 2014, over 4 100 applicants from 111 countries/regions submitted full applications for the sixth round exercise.

This prestigious scheme will unite top international research postgraduate students and Hong Kong's world-class research institutions.

香港博士研究生奖学金计划

香港博士研究生奖学金计划于2009年9月推出，目的是吸引世界各地最优秀及出色的研究生前来教资会资助院校就读博士研究生课程，而不论其国籍、工作经验和种族背景。

第五届香港博士研究生奖学金计划的得主为223位来自全球38个国家及地区的优秀学生。而至2014年12月的报名截止日期，4 100多名来自111个国家及地区的申请者就第六轮计划提交正式申请书。

这个备受推崇的计划将会把来自各地的研究生尖子，汇集于香港的世界级学府。

RGC Visits to UGC-funded institutions

The RGC visited the Hong Kong Institution of Education on 20 June 2014. The RGC visits one UGC-funded institution each year. The main objectives of the visit are for the RGC and Subject Panel members to:

- familiarise themselves with the overall research activities, research strategies and major achievements of the institution;
- see research facilities, equipment, project highlights and important research outputs/results with a view to understanding the proclaimed research direction; and
- meet and talk with academic staff and research postgraduate students about their research activities.

Visits and discussions with staff and research postgraduate students are undertaken in small groups. The visiting team is split broadly on the basis of Subject Panel groups. The discussions are for open collegial exchanges between staff and research postgraduate students and the RGC.

Provision of Expert Advice in Assessment of Academic Research Proposals

The RGC offers expert advice in assessing the academic research proposals of the following programmes:

State Natural Science Award

At the invitation of the Education Bureau, the RGC assists in the preliminary content assessment of the State Natural Science Award applications and makes recommendations to the Education Bureau for submission to the National Office for Science and Technology Awards.

研资局访问教资会资助院校

2014年6月20日，研资局探访了香港教育学院。研资局每年造访教资会资助院校的其中一间，其目的是让研资局成员及学科小组成员：

- 了解各院校的研究活动，研究策略及主要成就；
- 视察各种设施、设备、研究项目的重点及成果，从而了解该院校的研究方向；及
- 与教学人员和研究院研究课程学生会晤及讨论他们进行的研究活动。

访问及与教学人员和研究院研究课程学生的讨论，均以小组形式进行。研资局大致按学科小组的性质类别分成小组。小组讨论的目的是让教学人员及研究院研究课程学生与研资局及学科小组成员进行坦诚交流。

为学术研究建议书的评审提供专家意见

研资局亦会协助以下计划的学术评审工作，就计划下提交的研究建议书提供专家意见：

国家自然科学奖

应教育局的邀请，研资局会协助对国家自然科学奖申请书的内容作初步评审，并向教育局建议推荐名单，以便提交国家科学技术奖励工作办公室考虑。

How Funded Projects are Selected, Monitored and Assessed

资助项目的审批、监察与评核

How Projects are Selected

To drive Hong Kong's research quality to a higher level of excellence, the RGC is focusing its resources to provide better support to top quality research projects through competitive funding schemes.

Across the board, equal emphasis is given to both fundamental and applied research.

Additionally, the RGC must be satisfied that the projects it funds have significant intellectual and innovative content and serve the purpose of academic development. The potential to apply the research is considered by the RGC in the assessment of proposals but is not an overriding factor.

For applied research projects which involve potential benefits to industry in the short to medium term, the RGC expects to see some funding from the potential beneficiaries.

Why Monitor and Assess

Under its Terms of Reference, the RGC is required to monitor the implementation of research projects funded by disbursements from the UGC, and to report at least annually to the Government through the UGC.

The RGC considers that monitoring of on-going projects and assessment of completed projects is necessary for reasons of public accountability.

As part of its efforts to strive for improvement, the RGC constantly reviews its monitoring and assessment system with a view to streamlining the relevant processes and enhancing overall effectiveness.

The Principal Investigator/Project Coordinator of an approved project is therefore required to submit progress reports and a completion report on the project for monitoring and scrutiny by Subject Panel/Committee members. The sponsoring institution is required to manage the projects and expenditures, oversee the procurement of equipment and devices approved under the projects and to put in place a due internal monitoring system.

厘定拨款的准则

为提升香港学术研究的质素至另一高峰，研资局集中资源，通过具竞争性的拨款资助计划，为最优质的学术研究项目提供更多资助。

整体来说，本局对基础研究及应用研究一视同仁，无分轩輊。

此外，研资局必须确定其资助的研究项目具有重大学术价值、内容创新，又能促进学术发展。在评审项目申请时，本局会考虑该研究成果是否具有付诸实际应用的潜力，但这并非拨款的决定性因素。

对于能为工商界带来短期以至中期利益的应用研究项目，本局期望受惠的行业亦能承担部分资助。

监察与评核的目标

按职权范围，研资局必须监察在教资会研究经费下获拨款的研究项目，并透过教资会最少每年一次向政府提交报告。

为确保公帑用得其所，研资局认为必须监察进展中的项目，以及评核已完成的项目。

为了精益求精，研资局经常检讨监察与评核的机制，以期精简程序，提高整体效率。

因此，获拨款项目的首席研究员／项目统筹者必须向研资局呈交项目进度报告及项目完成报告，以供学科小组／委员会成员监察及审查。研究员所属的院校有责任管理项目及其支出，监察获拨款的设备及仪器的采购及安装，以及设立适当的内部监察机制。

Monitoring of On-going Projects

The objective of the monitoring is to ensure that the project is proceeding on schedule and that any problems identified are followed up by the Principal Investigator/Project Coordinator. In 2015, the RGC enhanced the monitoring measures. From the 2015/16 funding exercises, except a small number of short duration research projects which are granted project funds in a lump sum, the project funds of all research projects will be disbursed by instalments. The Principal Investigators / Project Coordinators concerned will have to demonstrate satisfactory progress before obtaining further instalments from the RGC.

For individual research projects, one Subject Panel member is assigned to each funded project with the responsibility for monitoring, on the basis of progress reports and completion report. The Subject Panel member assigned to the project reviews the progress report and, where necessary, provides his/her comments to the Principal Investigator for reference and follow-up action.

For group research projects, Project Coordinators are required to submit progress reports for the monitoring panel's/committee's scrutiny and follow up on comments made by the panel/committee.

Principal Investigators / Project Coordinators may also be required to present the progress and achievements at a symposium or during on-site visits to the panel/committee, research community and/or members of the public.

Assessment of Completed Projects

After the scheduled completion date of a project, the Principal Investigator/Project Coordinator concerned is required to submit a completion report detailing the outcome of the research project, the results achieved, students trained, and publications produced, as well as reporting on the use and application of the grant awarded. These completion reports are passed to the responsible panel/committee members for final assessment.

Completed projects are rated as "Satisfactory", "Barely Satisfactory" or "Unsatisfactory". These assessment results are also taken into account when assessing new grant applications from the same Principal Investigator/Project Coordinator.

监察进展中的项目

监察程序确保有关项目如期进行，并确保首席研究员／项目统筹者有跟进成员所发现及指出的问题。研资局于2015年加强监察程序。由2015/16年度起，除少数短期研究项目可一次过获得整笔资助款项外，所有项目的资助款项将为分期支付。有关首席研究员／项目统筹者必须展示满意进度，才可获得研资局进一步分期资助款项。

就个人研究项目而言，每个获资助的项目，均由一位指定的学科小组成员负责监察。成员根据项目进度报告及项目完成报告监察每个项目。学科小组成员在审阅进度报告后，会因应需要向项目的首席研究员反映意见，供其参考及跟进。

至于集体合作研究项目，项目统筹者必须向负责监察的小组／委员会呈交项目进度报告，以及对其意见作出跟进。

部分项目的首席研究员／项目统筹者须于研讨会或实地探访时向有关小组／委员会、研究界别，以及／或公众人士发表其研究进度及成果。

评核已完成的项目

在研究项目预定完成日期后，首席研究员／项目统筹者必须向研资局提交项目完成报告，详列出研究结果、成绩、接受培训的学生、已发表的报告、论文及文章，以至拨款的运用及应用的详情。这些报告会交由负责审核该项目的小组／委员会成员作最后评核。

评核已完成的项目分为「满意」、「仅符合要求」及「不满意」三个等级。当首席研究员／项目统筹者提交新的拨款申请时，研资局会考虑其过往的评核结果。

Feedback on Assessments

Feedback is an important part of the RGC's effort to encourage and assure quality standards in research projects. The feedback from external reviewers forms an essential part of the peer review process and enables researchers to improve and refine their research methodologies. It also represents a valuable input to the Hong Kong academia of new ideas and expertise from the international research community.

As a matter of policy, the RGC arranges to provide the unattributed comments of external reviewers to applicants of individual and group project grants and, where necessary, convey additional comments from the panel/committee.

Public Access to Completion Reports

To share the research findings with the public, for projects approved from the 2010/11 academic year onwards, Principal Investigators/Project Coordinators are required to release the completion reports containing abstract in non-technical terms, objectives, research output including a list of conference papers/publications/journals/research findings and contact information of Principal Investigators/Project Coordinators for public access through the RGC website.

反映评核的意见

研资局致力保证及提高研究项目的素质，向研究人员反映外部评审员的意见，是学者评审过程的重要部分。这项做法有助研究人员改进其研究方法，使之更为完善，并将国际研究界别的新意念及专业知识引入本地学术界。

按政策规定，研资局将外部评审员的意见以不具名方式转达给与个人及集体合作研究项目的申请人，如有需要，亦会转达小组／委员会的额外意见。

公开完成报告

为让公众分享研究成果，由2010/11学年获资助的计划开始，首席研究员／项目统筹者须公开其项目完成报告，并通过研资局网页让公众查阅。报告包含以浅白文字撰写的摘要、计划目标、研究成果，当中包括以表列形式列出所发表的会议论文／出版刊物／其他研究发现，以及首席研究员／项目统筹者的联络资料。

The Research Funding Environment in Hong Kong

香港研究资助环境面面观

Overview

Although funding for research in Hong Kong comes from various sources, the RGC, operating under the aegis of the UGC, is recognised as being the main public funding body for academic research in Hong Kong.

In the 2013/14 academic year, total research expenditure of the eight UGC-funded institutions for research projects, contracts, staff and studentships amounted to HK\$7.984 billion. This represented approximately 0.37% of the Hong Kong's Gross Domestic Product in 2013/14, compared with an expenditure of HK\$7.576 billion[#] expended in the 2012/13 academic year (representing about 0.36% of the Gross Domestic Product of the year).

概述

尽管香港研究工作有不同的资助来源，但在教资会之下运作的研资局，是香港学术研究的最主要公共资助机构。

于2013/14的学年，八间教资会资助的院校在研究项目、有关合约、职员薪酬及奖学金方面的研究总开支达**79.84**亿港元，约占2013/14年度本地生产总值**0.37%**，而2012/13学年的开支则为**75.76**亿港元[#]（约占该年度本地生产总值的**0.36%**）。

HIGHLIGHTS

提要

In the 2013/14 academic year, 5 900 new research grants and contracts worth HK\$3.272 billion were obtained by institutions from all sources.

受教资会资助的院校于**2013/14** 学年从各个途径获得资助共**32.72**亿港元，新增研究项目及合约达**5 900**项。

New Research Grants and Contracts

During the 2013/14 academic year, a total of 5 900 new research grants and contracts worth HK\$3.272 billion were obtained by the UGC-funded institutions from all sources. In the 2012/13 academic year, there were 5 433[#] new research grants and contracts worth HK\$3.085 billion[#].

Note: [#] Revised figures as of December 2014.

新增研究项目及合约

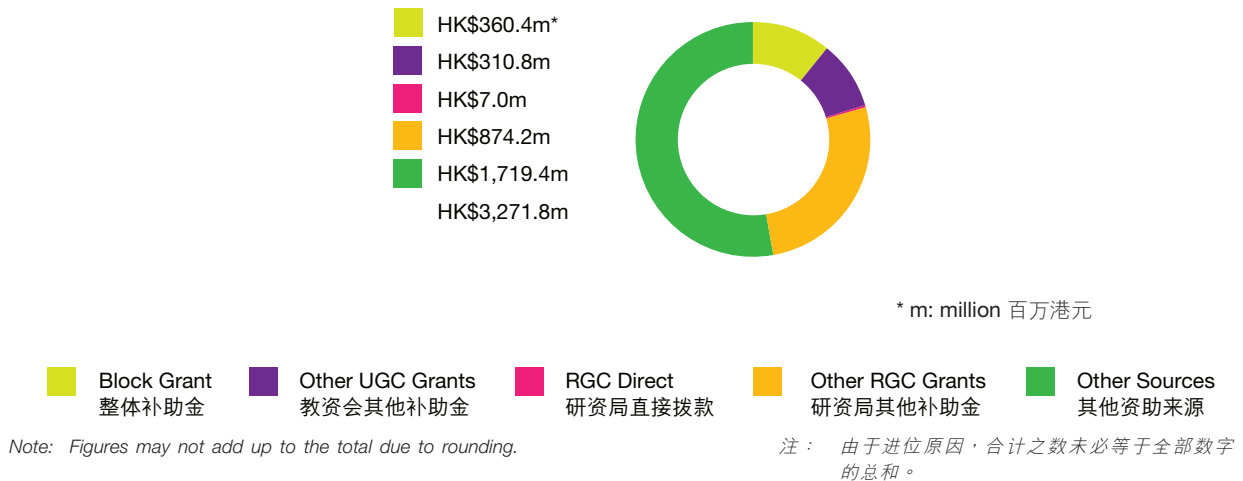
2013/14 学年内，受教资会资助的院校从各个途径获得资助的新增研究项目及合约共**5 900**项，所获拨款总额约**32.72**亿港元。而上一学年的新增研究项目及合约则为**5 433[#]**项，拨款总额为**30.85**亿港元[#]。

注：[#]截至2014年12月的修订数字。

Chart 5.1 outlines the proportion of funding for new research grants and contracts in the 2013/14 academic year by source. Detailed figures of funding for new research grants appear in Appendix D.

表 5.1 胪列 2013/14 学年新增研究项目及合约的资助来源及其分配比例，而有关新增研究项目的详细数字请见附录 D。

Chart 5.1: New Research Grants and Contracts by Source of Funding in the 2013/2014 Academic Year
表 5.1：2013/14 学年新增研究项目及合约的资助来源



On-going Research Grants and Contracts

The new research grants in the 2013/14 academic year brought the total number of on-going research and contract projects in Hong Kong to 19 819 with a total value of HK\$17.815 billion. This represented a steady increase over the 18 820[#] projects with a total value of HK\$16.188 billion[#] in the 2012/13 academic year.

Note: [#] Revised figures as of December 2014.

Chart 5.2 shows the distribution of funding in the 2013/14 academic year for on-going research grants, plus contracts, by source of funding for each of the eight UGC-funded institutions.

进展中的研究项目及合约

截至 2013/14 学年，研究及合约项目累积至 19 819 项，总拨款额达 178.15 亿港元，相对于 2012/13 学年的 18 820[#] 项累积项目及总拨款额 161.88 亿港元[#]，数字稳定上升。

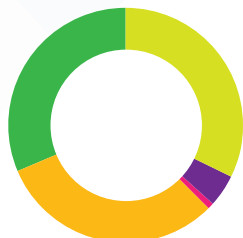
注：[#]截至 2014 年 12 月的修订数字。

表 5.2 详列 2013/14 学年八所受教资会资助院校进展中的研究项目及合约的资助来源。

Chart 5.2: On-going Research Grants and Contracts at Institutions by Source of Funding in the 2013/2014 Academic Year
表 5.2：各院校 2013/14 学年进展中研究项目及合约的资助来源

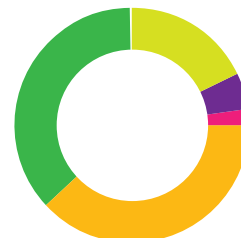
City University of Hong Kong (CityU)
香港城市大学

HK\$352.2m*
HK\$48.0m
HK\$10.6m
HK\$339.2m
HK\$340.8m
HK\$1,090.8m



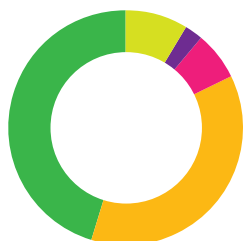
Hong Kong Baptist University (HKBU)
香港浸会大学

HK\$70.7m
HK\$20.1m
HK\$8.5m
HK\$150.2m
HK\$146.0m
HK\$395.6m



Lingnan University (LU)
岭南大学

HK\$4.1m
HK\$1.2m
HK\$3.1m
HK\$17.5m
HK\$21.3m
HK\$47.2m



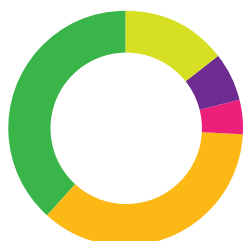
The Chinese University of Hong Kong (CUHK)
香港中文大学

HK\$423.5m
HK\$226.7m
HK\$7.1m
HK\$753.9m
HK\$1,522.2m
HK\$2,933.4m



The Hong Kong Institute of Education (HKIEd)
香港教育学院

HK\$18.3m
HK\$8.2m
HK\$6.0m
HK\$45.0m
HK\$47.8m
HK\$125.3m



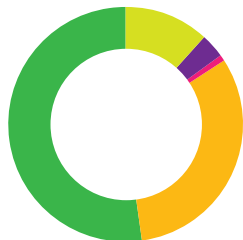
The Hong Kong Polytechnic University (PolyU)
香港理工大学

HK\$395.2m
HK\$56.2m
HK\$31.5m
HK\$396.5m
HK\$1,045.2m
HK\$1,924.5m



The Hong Kong University of Science and Technology (HKUST)
香港科技大学

HK\$211.7m
HK\$61.6m
HK\$17.4m
HK\$575.6m
HK\$945.6m
HK\$1,811.8m



The University of Hong Kong (HKU)
香港大学

HK\$345.9m
HK\$1,501.0m
HK\$12.7m
HK\$944.5m
HK\$6,682.1m
HK\$9,486.3m



* m: million 百万港元

Block Grant 整体补助金 Other UGC Grants 教资会其他补助金 RGC Direct Allocation 研资局直接拨款 RGC Competitive Grants 研资局角逐拨款 Other Sources 其他资助来源

Note: Figures may not add up to the corresponding totals due to rounding.

注：由于进位原因，合计之数未必等于全部数字的总和。

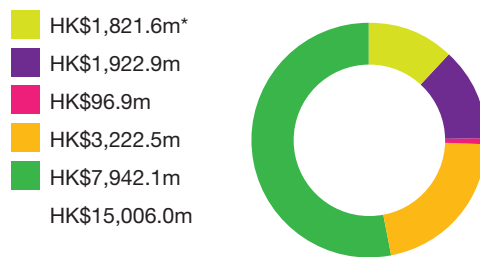
Funding for On-going Research Grant Projects

Total funding for on-going research grant projects, including the newly funded ones, amounted to HK\$15.006 billion in the 2013/14 academic year, compared with HK\$13.299 billion[#] in the 2012/13 academic year and HK\$12.076 billion in the 2011/12 academic year. Of the total figure, about 50% came from the UGC or the RGC.

Note: [#] Revised figures as of December 2014.

Chart 5.3 outlines the proportion of funding for on-going research grant projects in the 2013/14 academic year by source, while more detailed figures are given in Appendix E.

Chart 5.3: Funding for On-going Research Grants Projects by Source of Funding in the 2013/2014 Academic Year
表 5.3 : 2013/14 学年进展研究项目及合约的资助来源



* m: million 百万港元

Block Grant 整体补助金
 Other UGC Grants 教资会其他补助金
 RGC Direct 研资局直接拨款
 Other RGC Grants 研资局其他补助金
 Other Sources 其他资助来源

Note: Figures may not add up to the total due to rounding.

注：由于进位原因，合计之数未必等于全部数字的总和。

进展中研究项目的拨款

进展中研究项目，连新获资助的项目计算在内，2013/14 学年的拨款总额为 150.06 亿港元。约 50% 资助来自教资会或研资局。而 2012/13 学年及 2011/12 学年的总额分别为 132.99 亿港元[#] 及 120.76 亿港元。

注：[#]截至 2014 年 12 月的修订数字。

表 5.3 胪列 2013/14 学年进展中研究项目的资助来源及其分配比例，详细数字请参阅附录 E。

Research Output in Hong Kong

The total number of output of refereed and non-refereed publications in the 2013/14 academic year was 26 374 compared with 25 064 in the 2012/13 academic year. Of the total, 19 080 were refereed compared with 18 209 in 2012/13. The share of refereed outputs in total research outputs was 72.3% in the 2013/14 academic year, representing a slight decrease from 72.7% in the 2012/13 academic year.

RGC Contacts with Other Funding Bodies

The RGC maintains regular contacts with other bodies that provide funding for research. This good working relationship ensures that applications for grants are cross-checked to avoid unjustified duplication. The main research organisations with which the RGC maintains regular contacts are:

- Croucher Foundation
- Environment and Conservation Fund
- Health and Medical Research Fund
- Innovation and Technology Commission
- Quality Education Fund
- S K Yee Medical Foundation
- Overseas bodies and organisations in the Mainland with funding for academic research

香港的研究成果

本港研究人员于2013/14学年内发表经审阅及未经审阅的研究作品共26 374份，而于2012/13学年则有25 064份。其中，经审阅的有19 080份，而上一年度则为18 209份。此外，2013/14学年经审阅的研究作品在研究作品总数所占的比重为72.3%，比2012/13学年的72.7%略低。

研资局与其他研究资助机构的联系

研资局与其他资助研究的机构经常保持联系，互相核对研究经费的申请，以防止不合理的重迭拨款。研资局经常与下列主要研究资助机构保持联系：

- 裘槎基金会
- 环境及自然保育基金
- 医疗卫生研究基金
- 创新科技署
- 优质教育基金
- 余兆麒医疗基金
- 海外及内地的学术研究资助机构



Appendices

附录

Research Grants Council 研究资助局

A	RGC Membership 2014/15 研资局2014/15年度成员名单	46
B	Attendance Record of RGC Members in 2014/15 2014/15年度研资局成员出席会议的记录	48
C	Committee/Panel Membership 2014/15 委员会/学科小组2014/15年度成员名单	50
D	Summary of Funding for New Research Grant Projects 新增研究项目拨款摘要	81
E	Summary of Funding for On-going Research Grant Projects 进展中研究项目拨款摘要	82
F	Research Outputs by Broad Subject Area and by Institution 按学科及院校分项的研究成果	83

Appendix A: RGC Membership 2014/15 附录 A：研资局 2014/15 年度成员名单

RGC Member 研资局成员	Institution 所属机构	Appointed in (Month/Year) 委任于(月/年)
Prof Benjamin W Wah (Chairman) 华云生教授 (主席)	The Chinese University of Hong Kong 香港中文大学	1/2013
Prof Terry KF Au 区洁芳教授	The University of Hong Kong 香港大学	7/2010
Prof Peter Baehr	Lingnan University 岭南大学	7/2012
Prof Iris Benzie	The Hong Kong Polytechnic University 香港理工大学	7/2014
Prof Moses HW Chan 陈鸿渭教授	The Pennsylvania State University 宾夕法尼亚州立大学	7/2007
Prof Louis KC Chan 陈国器教授	University of Illinois at Urbana-Champaign 伊利诺大学厄巴纳—香槟分校	7/2009
Prof Jack Chun-yiu Cheng 郑振耀教授	The Chinese University of Hong Kong 香港中文大学	7/2014
Dr Nim-kwan Cheung 张念坤博士	Ross Sciences Limited 诺资有限公司	7/2009
Prof Yip-wah Chung, BBS 锺业华教授, BBS	Northwestern University 西北大学	7/2011
Prof Paul Clark	The University of Auckland 奥克兰大学	7/2014
Prof Anne Cooke	University of Cambridge 剑桥大学	7/2009
Prof Arthur B Ellis	City University of Hong Kong 香港城市大学	7/2013
Prof Joanna Ho 何莉芸教授	University of California, Irvine 加州大学尔湾分校	7/2012
Prof Ronnie Po-chia Hsia 夏伯嘉教授	The Pennsylvania State University 宾夕法尼亚州立大学	7/2007
Prof Chun Hui 许浚教授	The University of Hong Kong 香港大学	7/2014
Prof Chao-jun Li 李朝军教授	McGill University 麦基尔大学	7/2013
Mr Allen Kam-sing Ma 马锦星先生	Hong Kong Science & Technology Parks Corporation 香港科技园公司	7/2014
Prof Ross Murch 穆乐思教授	The Hong Kong University of Science and Technology 香港科技大学	7/2010

Appendix A: RGC Membership 2014/15
附录 A：研资局 2014/15 年度成员名单

RGC Member 研资局成员	Institution 所属机构	Appointed in (Month/Year) 委任于(月/年)
Prof Jay Siegel	Tianjin University 天津大学	7/2014
Prof Kar-yan Tam 谭嘉因教授	Hong Kong University of Science and Technology 香港科技大学	7/2014
Prof Paul KH Tam 谭广亨教授	The University of Hong Kong 香港大学	10/2011
Prof Rocky S Tuan 段崇智教授	University of Pittsburg 匹兹堡大学	7/2013
Prof Wing-hung Wong 王永雄教授	Stanford University 史丹福大学	7/2009
Prof Edward Sze-shing Yeung 杨仕成教授	Iowa State University 爱荷华州立大学	7/2014
Prof Paul KL Yu 余劫离教授	University of California, San Diego 加州大学圣地牙哥分校	7/2008
Prof On-ching Yue (Ex-officio Member) 余安正教授 (当然成员)	Innovation and Technology Commission 创新科技署	7/2011
Ms Sharon Ho (Secretary) 何皓璇女士 (秘书)	University Grants Committee Secretariat 大学教育资助委员会秘书处	

Appendix B: Attendance Record of RGC Members in 2014/15^{Note 1}
 附录 B：2014/15 年度研资局成员出席会议的记录^{注 1}

Name 姓名	Total number of RGC meeting(s) 研资局会议的总次数	Total number of RGC meeting(s) attended 成员出席研资局 会议次数	Attendance rate 出席率
Prof Benjamin W Wah 华云生教授	2	2	100%
Prof Terry KF Au 区洁芳教授	2	2	100%
Prof Peter Baehr	2	1	50%
Prof Iris Benzie	2	2	100%
Prof Moses HW Chan* 陈鸿渭教授*	2	1	50%
Prof Louis KC Chan* 陈国器教授*	2	2	100%
Prof Jack Chun-yiu Cheng 郑振耀教授	2	2	100%
Dr Nim-kwan Cheung 张念坤博士	2	2	100%
Prof Yip-wah Chung, BBS* 锺业华教授, BBS*	2	2	100%
Prof Paul Clark*	2	2	100%
Prof Anne Cooke*	2	2	100%
Prof Arthur B Ellis	2	2	100%
Prof Joanna Ho* 何莉芸教授*	2	2	100%
Prof Ronnie Po-chia Hsia* 夏伯嘉教授*	2	2	100%
Prof Chun Hui 许浚教授	2	2	100%
Prof Chao-jun Li* 李朝军教授*	2	1	50%
Mr Allen Kam-sing Ma 马锦星先生	2	2	100%
Prof Ross Murch 穆乐思教授	2	1	50%
Prof Jay Siegel*	2	2	100%
Prof Kar-yan Tam 谭嘉因教授	2	2	100%

Appendix B: Attendance Record of RGC Members in 2014/15^{Note 1}
 附录 B：2014/15 年度研资局成员出席会议的记录^{注 1}

Name 姓名	Total number of RGC meeting(s) 研资局会议的总次数	Total number of RGC meeting(s) attended 成员出席研资局 会议次数	Attendance rate 出席率
Prof Paul KH Tam 谭广亨教授	2	2	100%
Prof Rocky S Tuan* 段崇智教授*	2	2	100%
Prof Wing-hung Wong* 王永雄教授*	2	2	100%
Prof Edward Sze-Shing Yeung* 杨仕成教授*	2	2	100%
Prof Paul KL Yu* 余劼离教授*	2	2	100%
Prof On-ching Yue 余安正教授	2	2	100%

Notes : 1. To enhance the transparency of the RGC operation, starting from December 2007, the attendance record of RGC Members is uploaded onto the homepage of the RGC, and is published in the Annual Report for public reference.

2. *denotes members outside Hong Kong.

注： 1. 为增加研资局工作的透明度，自 2007 年 12 月起，成员于研资局会议的出席率已刊载于局方的网页及年报内，供公众查阅。
 2. *为海外成员。

Appendix C: Committee/Panel Membership 2014/15 附录 C：委员会／学科小组 2014/15 年度成员名单

Subject Panels

学科小组

Biology and Medicine 生物学及医学		
Panel Member 学科小组成员	Institution 所属机构	Appointed in (Month/Year) 委任于(月/年)
Prof Rocky S Tuan (Chairman) 段崇智教授 (主席)	University of Pittsburgh 匹兹堡大学	7/2013
Prof Kai-nan An (Deputy Chairman – Joint Research Schemes) 安介南教授 (副主席－合作研究计划)	Mayo Clinic College of Medicine 梅约诊所医学中心	2/2015
Prof Colin Baigent	University of Oxford 牛津大学	1/2015
Prof Rudolf Bauer	Karl-Franzens-Universitaet Graz 格拉茨大学	10/2009
Prof David Bellinger	Boston Children's Hospital 波士顿儿童医院	3/2014
Prof Ben Berkhout	University of Amsterdam 阿姆斯特丹大学	10/2009
Prof Juliana CN Chan 陈重娥教授	The Chinese University of Hong Kong 香港中文大学	11/2012
Prof Wai Yee Chan 陈伟仪教授	The Chinese University of Hong Kong 香港中文大学	1/2015
Prof Zhenyu Chen 陈振宇教授	The Chinese University of Hong Kong 香港中文大学	1/2015
Prof Rossa Chiu 赵慧君教授	The Chinese University of Hong Kong 香港中文大学	11/2012
Prof Yang Dan 丹扬教授	University of California, Berkeley 加州大学柏克莱分校	11/2012
Prof Farida Fortune	Queen Mary University of London 伦敦大学玛丽皇后学院	11/2011
Prof Xiaohua Gong	University of California, Berkeley 加州大学柏克莱分校	1/2014
Prof Min Han 韩珉教授	University of Colorado at Boulder 科罗拉多大学波尔得分校	11/2011
Dr Zhigang He 何志刚博士	Harvard University 哈佛大学	1/2014

Appendix C: Committee/Panel Membership 2014/15 附录 C：委员会／学科小组 2014/15 年度成员名单

Panel Member 学科小组成员	Institution 所属机构	Appointed in (Month/Year) 委任于(月/年)
Dr Chi-chung Hui	University of Toronto 多伦多大学	1/2014
Prof William N Hunter	University of Dundee 邓迪大学	11/2010
Prof Wei Jia 贾伟教授	University of Hawaii at Monoa 夏威夷大学马诺阿分校	1/2014
Prof Paul Kwan-sing Lam 林群声教授	City University of Hong Kong 香港城市大学	2/2012
Dr William J Langston	Marine Biological Association of the United Kingdom 英国海洋生物学协会	11/2012
Prof Yu-lung Lau 刘宇隆教授	The University of Hong Kong 香港大学	3/2013
Prof Ping-yee Law 罗秉义教授	University of Minnesota 明尼苏达大学	1/2014
Prof Chung-mau Lo 卢宠茂教授	The University of Hong Kong 香港大学	1/2014
Prof Matthias Löhr	Karolinska University Hospital 卡罗琳大学医院	1/2013
Prof Fanxin Long	Washington University 华盛顿大学	1/2014
Prof Aiping Lu 吕爱平教授	Hong Kong Baptist University 香港浸会大学	1/2014
Prof Maria Masucci	Karolinska Institutet 卡罗琳医学院	11/2012
Prof B Paul Morgan	Cardiff University 卡迪夫大学	1/2013
Prof Stephen JD O'Keefe	University of Pittsburgh 匹兹堡大学	2/2015
Prof Eric G Pamer	Memorial Sloan-Kettering Cancer Center 史隆基达灵纪念癌症中心	11/2012
Prof Peter Petraitis	University of Pennsylvania 宾夕法尼亚大学	3/2014
Prof Roger H Reeves	Johns Hopkins University 约翰斯·霍普金斯大学	10/2009
Prof Alan B Rickinson	The University of Birmingham 伯明翰大学	7/2012
Prof Jerry W Shay	University of Texas Southwestern Medical Center 德克萨斯州大学西南医学中心	2/2013

Appendix C: Committee/Panel Membership 2014/15
附录 C：委员会／学科小组 2014/15 年度成员名单

Panel Member 学科小组成员	Institution 所属机构	Appointed in (Month/Year) 委任于(月/年)
Prof Geoffrey L Smith	University of Cambridge 剑桥大学	11/2011
Prof Eric J Stanbridge	University of California, Irvine 加州大学尔湾分校	2/2012
Prof Adrian Thrasher	University College London 伦敦大学学院	1/2013
Prof Hung-fat Tse 谢鸿发教授	The University of Hong Kong 香港大学	2/2012
Prof Dazhi Wang 王大之教授	Harvard University 哈佛大学	1/2014
Prof Zhiyong Wang 王志勇教授	Stanford University 史丹福大学	3/2014
Prof Zilong Wen 温子龙教授	The Hong Kong University of Science and Technology 香港科技大学	2/2012
Prof Chris Kong-chu Wong 黄港住教授	Hong Kong Baptist University 香港浸会大学	1/2014
Prof Frances Kam Yuet Wong 黄金月教授	The Hong Kong Polytechnic University 香港理工大学	1/2015
Prof Ian Chi Kei Wong 黄志基教授	The University of Hong Kong 香港大学	3/2014
Prof Nathalie Wong 王昭春教授	The Chinese University of Hong Kong 香港中文大学	11/2012
Prof Wing-sze Wong 黄颖诗教授	The Hong Kong Institute of Education 香港教育学院	1/2014
Prof Ed Xuekui Wu 吴学奎教授	The University of Hong Kong 香港大学	1/2015
Prof Chunfeng Zhao	Mayo Clinic 梅约临床医学院	1/2015
Prof Minghao Zheng	The University of Western Australia 西澳大学	1/2015
Prof Jun Xia 夏军教授	The Hong Kong University of Science and Technology 香港科技大学	3/2013
Prof Yiji Xia 夏亦莽教授	Hong Kong Baptist University 香港浸会大学	3/2013
Prof Aimin Xu 徐爱民教授	The University of Hong Kong 香港大学	3/2013
Dr Zhongying Zhao 赵中应博士	Hong Kong Baptist University 香港浸会大学	3/2013

Appendix C: Committee/Panel Membership 2014/15 附录 C：委员会／学科小组 2014/15 年度成员名单

Subject Panels

学科小组

Business Studies 商学		
Panel Member 学科小组成员	Institution 所属机构	Appointed in (Month/Year) 委任于(月/年)
Prof Louis KC Chan (Chairman) 陈国器教授 (主席)	University of Illinois at Urbana-Champaign 伊利诺大学厄巴纳—香槟分校	12/2010
Prof Hanming Fang (Deputy Chairman – Joint Research Schemes) 方汉明教授 (副主席—合作研究计划)	University of Pennsylvania 宾夕法尼亚大学	2/2015
Prof Eli Bartov	New York University 纽约大学	3/2014
Prof Fernando Bernstein	Duke University 杜克大学	3/2013
Prof S Tamer Cavusgil	Georgia State University 乔治亚州立大学	10/2009
Prof Patrick YK Chau 周荫强教授	The University of Hong Kong 香港大学	3/2014
Prof Yongmin Chen 陈勇民教授	University of Colorado at Boulder 科罗拉多大学博尔德分校	1/2014
Prof Yuxin Chen 陈宇新教授	New York University Shanghai 上海纽约大学	1/2015
Prof Agnes CS Cheng 郑振兴教授	The Hong Kong Polytechnic University 香港理工大学	2/2013
Prof Daniel A Cohen	University of Texas at Dallas 德克萨斯州大学达拉斯分校	1/2014
Prof Andrew Delios	National University of Singapore 新加坡国立大学	1/2015
Prof Michael B Devereux	University of British Columbia 英属哥伦比亚大学	11/2010
Prof Barbara Flynn	Indiana University 印第安纳大学	3/2014
Prof Anindya Ghose	New York University 纽约大学	1/2014

Appendix C: Committee/Panel Membership 2014/15 附录 C：委员会／学科小组 2014/15 年度成员名单

Panel Member 学科小组成员	Institution 所属机构	Appointed in (Month/Year) 委任于(月/年)
Prof Vidhan K Goyal	The Hong Kong University of Science and Technology 香港科技大学	1/2014
Prof JJ Po-an Hsieh 谢博安教授	Georgia State University 乔治亚州立大学	1/2014
Prof Raymond Kan	University of Toronto 多伦多大学	1/2015
Prof Haitao Li 李海涛教授	Cheung Kong Graduate School of Business 长江商学院	1/2015
Dr Hui Liao	University of Maryland 马里兰大学	2/2015
Prof Chen Lin 林晨教授	The University of Hong Kong 香港大学	1/2012
Prof Ping Lin 林平教授	Lingnan University 岭南大学	2/2012
Prof Anna S Mattila	The Pennsylvania State University 宾夕法尼亚州立大学	11/2012
Prof Baba Shiv	Stanford University 史丹福大学	10/2009
Prof Suraj Srinivasan	Harvard University 哈佛大学	1/2015
Prof Zhigang Tao 陶志刚教授	The University of Hong Kong 香港大学	2/2015
Prof James Thong 汤永亮教授	Hong Kong University of Science and Technology 香港科技大学	1/2015
Prof David Tse 谢贵枝教授	The University of Hong Kong 香港大学	2/2012
Prof Linn Van Dyne	Michigan State University 密歇根州立大学	2/2012
Prof Houmin Yan 严厚民教授	City University of Hong Kong 香港城市大学	2/2012
Prof Andy CL Yeung 杨昌良教授	The Hong Kong Polytechnic University 香港理工大学	11/2012
Prof Shaohui Zheng 郑少辉教授	The Hong Kong University of Science and Technology 香港科技大学	1/2014
Prof Kevin Zhou 周政教授	The University of Hong Kong 香港大学	1/2012

Appendix C: Committee/Panel Membership 2014/15 附录 C：委员会／学科小组 2014/15 年度成员名单

Subject Panels

学科小组

Engineering 工程学		
Panel Member 学科小组成员	Institution 所属机构	Appointed in (Month/Year) 委任于(月/年)
Prof Paul KL Yu (Chairman) 余劭离教授 (主席)	University of California, San Diego 加州大学圣地牙哥分校	7/2009
Prof Wing Kam Liu (Deputy Chairman – Joint Research Schemes) 廖荣锦教授 (副主席－合作研究计划)	Northwestern University 西北大学	2/2015
Prof Jiun-shyan Chen (Chairman, Mechanical, Civil & Materials Engineering and System Design Sub-Panel) 陈俊贤教授 (机械、土木及物料工程暨 系统设计学科分组主席)	University of California, San Diego 加州大学圣地牙哥分校	10/2009
Prof Yuri Bazilevs	University of California, San Diego 加州大学圣地牙哥分校	12/2014
Prof Adrian Bejan	Duke University 杜克大学	1/2012
Prof L Catherine Brinson	Northwestern University 西北大学	1/2015
Prof Lilong Cai 蔡李隆教授	The Hong Kong University of Science and Technology 香港科技大学	2/2014
Prof Xiaoqiang Cai 蔡小强教授	The Chinese University of Hong Kong 香港中文大学	11/2012
Prof Jiannong Cao 曹建农教授	The Hong Kong Polytechnic University 香港理工大学	3/2011
Prof Keith CC Chan 陈振冲教授	The Hong Kong Polytechnic University 香港理工大学	11/2012
Prof Chi-hou Chan 陈志豪教授	City University of Hong Kong 香港城市大学	2/2012
Prof Kam-tai Chan 陈锦泰教授	The Chinese University of Hong Kong 香港中文大学	3/2013

Appendix C: Committee/Panel Membership 2014/15 附录 C：委员会／学科小组 2014/15 年度成员名单

Panel Member 学科小组成员	Institution 所属机构	Appointed in (Month/Year) 委任于(月/年)
Prof Christopher YH Chao 赵汝恒教授	The Hong Kong University of Science and Technology 香港科技大学	1/2012
Prof Kwok-tong Chau 邹国棠教授	The University of Hong Kong 香港大学	11/2010
Prof Chang Wen Chen 陈长汶教授	University at Buffalo, The State University of New York 纽约州立大学水牛城分校	12/2014
Prof Kevin J Chen 陈敬教授	The Hong Kong University of Science and Technology 香港科技大学	3/2013
Prof Winston Dah-ming Chiu 邱达民教授	The Chinese University of Hong Kong 香港中文大学	11/2013
Prof Ken P Chong 张建平教授	The George Washington University 乔治华盛顿大学	11/2012
Prof George Q Huang 黄国全教授	The University of Hong Kong 香港大学	10/2009
Prof Jie Huang 黄捷教授	The Chinese University of Hong Kong 香港中文大学	2/2014
Prof Ron Hui 许树源教授	The University of Hong Kong 香港大学	2/2013
Prof Chennupati Jagadish	Australian National University 澳洲国立大学	12/2014
Prof HV Jagadish	University of Michigan 密歇根大学	11/2010
Prof Woody Jiann-wen Ju 朱建文教授	University of California, Los Angeles 加州大学洛杉矶分校	7/2014
Prof Jang-kyo Kim 金章教教授	The Hong Kong University of Science and Technology 香港科技大学	10/2009
Prof Irwin King 金国庆教授	The Chinese University of Hong Kong 香港中文大学	2/2012
Prof Sritawat Kitipornchai 陈锦顺教授	University of Queensland 昆士兰大学	11/2010
Prof Philip T Krein	University of Illinois at Urbana-Champaign 伊利诺大学厄巴纳-香槟分校	7/2014
Prof Yue Kuo 郭育教授	Texas A&M University 德州农工大学	2/2013
Prof Albert KH Kwan 关国雄教授	The University of Hong Kong 香港大学	2/2014

Appendix C: Committee/Panel Membership 2014/15 附录 C：委员会／学科小组 2014/15 年度成员名单

Panel Member 学科小组成员	Institution 所属机构	Appointed in (Month/Year) 委任于(月/年)
Prof Kenneth Kin-man Lam 林健文教授	The Hong Kong Polytechnic University 香港理工大学	11/2013
Prof Kei May Lau 刘纪美教授	The Hong Kong University of Science and Technology 香港科技大学	11/2010
Prof Janny May-yee Leung 梁美儿教授	The Chinese University of Hong Kong 香港中文大学	11/2010
Prof Yiu-wing Leung 梁耀荣教授	Hong Kong Baptist University 香港浸会大学	3/2011
Prof Ping Li 李坪教授	City University of Hong Kong 香港城市大学	11/2013
Prof Xiao-yan Li 李晓岩教授	The University of Hong Kong 香港大学	11/2012
Prof Chain-tsuan Liu 刘锦川教授	City University of Hong Kong 香港城市大学	11/2013
Prof Yun-hui Liu 刘云辉教授	The Chinese University of Hong Kong 香港中文大学	11/2013
Prof Irene MC Lo 劳敏慈教授	The Hong Kong University of Science and Technology 香港科技大学	1/2015
Prof Siu-ming Lo 卢兆明教授	City University of Hong Kong 香港城市大学	11/2010
Prof Jon Longtin	Stony Brook University 石溪大学	12/2014
Prof Sylvie Lorente	University of Toulouse 图卢兹大学	2/2013
Prof Jian Lu 吕坚教授	City University of Hong Kong 香港城市大学	1/2012
Prof Max QH Meng 孟庆虎教授	The Chinese University of Hong Kong 香港中文大学	11/2010
Prof Philip KT Mok 莫国泰教授	The Hong Kong University of Science and Technology 香港科技大学	10/2009
Prof Anil Netravali	Cornell University 康奈尔大学	11/2013
Prof Charles WW Ng 吴宏伟教授	The Hong Kong University of Science and Technology 香港科技大学	1/2015
Prof Joseph KY Ng 吴其彦教授	Hong Kong Baptist University 香港浸会大学	1/2012

Appendix C: Committee/Panel Membership 2014/15 附录 C：委员会／学科小组 2014/15 年度成员名单

Panel Member 学科小组成员	Institution 所属机构	Appointed in (Month/Year) 委任于(月/年)
Prof Michael KP Ng 吴国宝教授	Hong Kong Baptist University 香港浸会大学	10/2009
Prof Thomas Shiu Tong Ng 吴兆堂教授	The University of Hong Kong 香港大学	1/2015
Dr Vincent TY Ng 吴道义博士	The Hong Kong Polytechnic University 香港理工大学	1/2012
Prof Jian-lei Niu 牛建磊教授	The Hong Kong Polytechnic University 香港理工大学	1/2012
Prof Thomas J Overbye	University of Illinois at Urbana-Champaign 伊利诺大学厄巴纳-香槟分校	12/2014
Prof Stella W Pang 彭慧芝教授	City University of Hong Kong 香港城市大学	11/2012
Prof Jian Pei 裴健教授	Simon Fraser University 西门菲沙大学	12/2014
Prof Long Quan 权龙教授	The Hong Kong University of Science and Technology 香港科技大学	11/2013
Prof Bertram Shi 施毅明教授	The Hong Kong University of Science and Technology 香港科技大学	11/2010
Ir Prof Michael Kin Wai Siu 邵健伟教授	The Hong Kong Polytechnic University 香港理工大学	11/2010
Prof Wan-chi Siu 萧允治教授	The Hong Kong Polytechnic University 香港理工大学	11/2010
Prof Dong Sun 孙东教授	City University of Hong Kong 香港城市大学	1/2012
Prof Norman Chihnan Tien 田之楠教授	The University of Hong Kong 香港大学	1/2014
Prof Masayoshi Tomizuka 冨冢诚义教授	University of California, Berkeley 加州大学柏克莱分校	10/2009
Prof Hon Ki Tsang 曾汉奇教授	The Chinese University of Hong Kong 香港中文大学	2/2012
Prof Michael CK Tse 谢智刚教授	The Hong Kong Polytechnic University 香港理工大学	2/2013
Prof Fugee Tsung 宗福季教授	The Hong Kong University of Science and Technology 香港科技大学	11/2013
Prof Alexander Ping-kong Wai 卫炳江教授	The Hong Kong Polytechnic University 香港理工大学	1/2012

Appendix C: Committee/Panel Membership 2014/15 附录 C：委员会／学科小组 2014/15 年度成员名单

Panel Member 学科小组成员	Institution 所属机构	Appointed in (Month/Year) 委任于(月/年)
Prof Liqiu Wang 王立秋教授	The University of Hong Kong 香港大学	11/2013
Prof Lusheng Wang 王鲁生教授	City University of Hong Kong 香港城市大学	2/2014
Prof Tao Wang 王韬教授	The Hong Kong Polytechnic University 香港理工大学	3/2013
Prof Oliver Dapeng Wu 吴大鹏教授	University of Florida 佛罗里达大学	12/2014
Prof Lawrence K Yeung 阳坤教授	The University of Hong Kong 香港大学	1/2012
Prof Ben Young 杨立伟教授	The University of Hong Kong 香港大学	11/2010
Dr Yuen-tak Yu 余远德博士	City University of Hong Kong 香港城市大学	2/2013
Prof Richard Kwok Kit Yuen 袁国杰教授	City University of Hong Kong 香港城市大学	1/2015
Prof Pong Chi Yuen 阮邦志教授	Hong Kong Baptist University 香港浸会大学	12/2014
Prof Shuzhong Zhang 张树中教授	University of Minnesota 明尼苏达大学	3/2014
Prof Tongyi Zhang 张统一教授	The Hong Kong University of Science and Technology 香港科技大学	11/2012
Prof Xiaodong Zhang 张晓东教授	The Ohio State University 俄亥俄州立大学	2/2013
Prof Li Min Zhou 周利民教授	The Hong Kong Polytechnic University 香港理工大学	1/2012
Prof Moshe Zukerman	City University of Hong Kong 香港城市大学	1/2014

Appendix C: Committee/Panel Membership 2014/15 附录 C：委员会／学科小组 2014/15 年度成员名单

Subject Panels

学科小组

Humanities and Social Sciences 人文学及社会科学		
Panel Member 学科小组成员	Institution 所属机构	Appointed in (Month/Year) 委任于(月/年)
Prof Ronnie Po-chia Hsia (Chairman) 夏伯嘉教授 (主席)	The Pennsylvania State University 宾夕法尼亚州立大学	7/2011
Prof Elisabetta Corsi (Deputy Chairman – Joint Research Schemes) 伊丽教授 (副主席－合作研究计划)	University of Rome, La Sapienza 罗马大学	2/2015
Prof Maria M Piñango (Chairman, Psychology and Linguistics Sub-Panel) (心理学及语言学科 分组主席)	Yale University 耶鲁大学	9/2008
Prof C Cindy Fan 范芝芬教授 (Chairman, Social and Behavioural Sciences Sub-Panel) (社会及行为科学学科 分组主席)	University of California, Los Angeles 加州大学洛杉矶分校	11/2010
Prof Jennifer Adams	Drexel University 德雷塞尔大学	1/2015
Prof Terry KF Au 区洁芳教授	The University of Hong Kong 香港大学	2/2014
Prof Yanjie Bian 边燕杰教授	The University of Minnesota 明尼苏达大学	2/2014
Prof Jean-Pierre Cabestan 高敬文教授	Hong Kong Baptist University 香港浸会大学	2/2013
Prof Allen R Carlson 寇艾伦教授	Cornell University 康奈尔大学	11/2010
Prof Cecilia LW Chan, JP 陈丽云教授, JP	The University of Hong Kong 香港大学	10/2009
Prof Lei Chang 张雷教授	The Hong Kong Institute of Education 香港教育学院	12/2011
Prof Maria PS Cheng 郑宝璇教授	City University of Hong Kong 香港城市大学	12/2014

Appendix C: Committee/Panel Membership 2014/15 附录 C：委员会／学科小组 2014/15 年度成员名单

Panel Member 学科小组成员	Institution 所属机构	Appointed in (Month/Year) 委任于(月/年)
Prof Kai-wing Chow 周启荣教授	University of Illinois at Urbana Champagne 伊利诺大学厄巴纳-香槟分校	11/2013
Prof Rey Chow 周蕾教授	Duke University 杜克大学	2/2013
Prof Paul Clark	The University of Auckland 奥克兰大学	11/2011
Prof Alexandra Cook	The University of Hong Kong 香港大学	12/2014
Prof Mark E Courtney	The University of Chicago 芝加哥大学	12/2010
Prof Stephen Crain	Macquarie University 麦觉理大学	11/2013
Prof Lucy Dunne	University of Minnesota 明尼苏达大学	1/2015
Prof Anne Edwards	University of Oxford 牛津大学	3/2014
Prof Manfred Fischer	Vienna University of Economic and Business 维也纳经济管理大学	2/2013
Prof Harrison Fraker	University of California, Berkeley 加州大学柏克莱分校	2/2013
Prof Piper Gaubatz	University of Massachusetts 麻省大学	2/2015
Prof Ping-chen Hsiung 熊秉真教授	The Chinese University of Hong Kong 香港中文大学	11/2013
Prof Bo Huang 黄波教授	The Chinese University of Hong Kong 香港中文大学	2/2014
Prof Chu-ren Huang 黄居仁教授	The Hong Kong Polytechnic University 香港理工大学	2/2012
Prof Jill Hunter	The University of New South Wales 新南威尔士大学	11/2013
Prof Wilt Idema	Harvard University 哈佛大学	12/2014
Prof Fiona Lee	University of Michigan 密歇根大学	2/2013
Prof James Z Lee 李中清教授	The Hong Kong University of Science and Technology 香港科技大学	10/2009
Prof Thomas Hun-tak Lee 李行德教授	The Chinese University of Hong Kong 香港中文大学	7/2014

Appendix C: Committee/Panel Membership 2014/15 附录 C：委员会／学科小组 2014/15 年度成员名单

Panel Member 学科小组成员	Institution 所属机构	Appointed in (Month/Year) 委任于(月/年)
Prof Pui-wa Lei 李佩华教授	The Pennsylvania State University 宾夕法尼亚州立大学	11/2011
Prof Angela Ki Che Leung 梁其姿教授	The University of Hong Kong 香港大学	11/2013
Prof Gigi Luk 陆智敏教授	Harvard University 哈佛大学	11/2013
Prof Joyce LC Ma 马丽庄教授	The Chinese University of Hong Kong 香港中文大学	1/2013
Prof Anita Mak	University of Canberra 坎培拉大学	2/2015
Prof Joshua KH Mok 莫家豪教授	The Hong Kong Institute of Education 香港教育学院	1/2013
Prof Magdalena Mo-ching Mok 莫慕贞教授	The Hong Kong Institute of Education 香港教育学院	2/2014
Prof Edward Y Ng 吴恩融教授	The Chinese University of Hong Kong 香港中文大学	12/2011
Prof On-cho Ng 伍安祖教授	The Pennsylvania State University 宾夕法尼亚州立大学	11/2011
Prof Daphna Oyserman	University of Southern California 南加州大学	1/2015
Prof Richard Bernhart Owen 欧文彬教授	Hong Kong Baptist University 香港浸会大学	2/2014
Prof Michael JE Palmer 彭文浩教授	Shantou University 汕头大学	2/2013
Prof Hai-hua Pan 彭海华教授	City University of Hong Kong 香港城市大学	2/2015
Prof Laikwan Pang 彭丽君教授	The Chinese University of Hong Kong 香港中文大学	2/2013
Prof Mu-chou Poo 蒲慕州教授	The Chinese University of Hong Kong 香港中文大学	11/2013
Prof Lisa Rofel	University of California, Santa Cruz 加州大学圣克鲁斯分校	2/2013
Prof Ute Schönpflug	Freie Universität Berlin 柏林自由大学	4/2013
Prof Daniel Shek, BBS, JP 石丹理教授, BBS, JP	The Hong Kong Polytechnic University 香港理工大学	11/2010

Appendix C: Committee/Panel Membership 2014/15 附录 C：委员会／学科小组 2014/15 年度成员名单

Panel Member 学科小组成员	Institution 所属机构	Appointed in (Month/Year) 委任于(月/年)
Prof Winnie WM So 苏咏梅教授	The Hong Kong Institute of Education 香港教育学院	1/2011
Prof David Takeuchi	Boston College 波士顿学院	1/2015
Prof Tony HW Tam 谭康荣教授	The Chinese University of Hong Kong 香港中文大学	11/2010
Prof Christian Wagner	City University of Hong Kong 香港城市大学	12/2014
Prof Alan Walker	The University of Sheffield 谢菲尔德大学	2/2015
Prof Guiguo Wang 王贵国教授	City University of Hong Kong 香港城市大学	3/2014
Prof Ya Ping Wang 王亚平教授	University of Glasgow 格拉斯哥大学	2/2013
Prof Roger Watson	University of Hull 赫尔大学	11/2013
Prof Lynn T White III 白霖教授	Princeton University 普林斯顿大学	10/2009
Prof Tim Wright 韦立德教授	The University of Sheffield 谢菲尔德大学	2/2013
Prof Emilie Yueh-yu Yeh 叶月瑜教授	Hong Kong Baptist University 香港浸会大学	2/2014
Prof Carine Yiu 姚玉敏教授	The Hong Kong University of Science and Technology 香港科技大学	12/2014
Prof Edwin ML Yiu 姚文礼教授	The University of Hong Kong 香港大学	10/2009
Prof May Yuan	The University of Texas at Dallas 德克萨斯州大学达拉斯分校	2/2015
Prof David Zweig 崔大伟教授	The Hong Kong University of Science and Technology 香港科技大学	2/2013

Appendix C: Committee/Panel Membership 2014/15 附录 C：委员会／学科小组 2014/15 年度成员名单

Subject Panels

学科小组

Physical Sciences 自然科学		
Panel Member 学科小组成员	Institution 所属机构	Appointed in (Month/Year) 委任于(月/年)
Prof Chao-jun Li (Chairman) 李朝军教授 (主席)	McGill University 麦基尔大学	7/2013
Prof Ralf Bundschuh (Deputy Chairman – Joint Research Schemes) (副主席－合作研究计划)	The Ohio State University 俄亥俄州立大学	2/2015
Prof Wesley Cantwell	The University of Liverpool 利物浦大学	11/2013
Prof Chak-keung Chan 陈泽强教授	The Hong Kong University of Science and Technology 香港科技大学	11/2012
Prof Ngai-hang Chan 陈毅恒教授	The Chinese University of Hong Kong 香港中文大学	11/2011
Prof Raymond Hon-fu Chan 陈汉夫教授	The Chinese University of Hong Kong 香港中文大学	2/2014
Prof Helen Lai-wa Chan-Wong 陈王丽华教授	The Hong Kong Polytechnic University 香港理工大学	11/2011
Prof Guohua Chen 陈国华教授	The Hong Kong University of Science and Technology 香港科技大学	1/2015
Prof Xuming He 何旭铭教授	University of Michigan 密歇根大学	3/2014
Prof István T Horváth 贺宏教授	City University of Hong Kong 香港城市大学	10/2009
Prof Arie Iserles	University of Cambridge 剑桥大学	3/2014
Prof Alex KY Jen 任广禹教授	University of Washington 华盛顿大学	11/2010
Prof Chun-sing Lee 李振声教授	City University of Hong Kong 香港城市大学	11/2013
Prof Frank Shun-cheng Lee 李顺诚教授	The Hong Kong Polytechnic University 香港理工大学	2/2014
Prof Wenbin Lin 林文斌教授	The University of Chicago 芝加哥大学	10/2009

Appendix C: Committee/Panel Membership 2014/15 附录 C：委员会／学科小组 2014/15 年度成员名单

Panel Member 学科小组成员	Institution 所属机构	Appointed in (Month/Year) 委任于(月/年)
Prof Ren Bao Liu 刘仁保教授	The Chinese University of Hong Kong 香港中文大学	1/2015
Prof Steven G Louie 雷干城教授	University of California, Berkeley 加州大学柏克莱分校	11/2010
Prof Bill Milne	University of Cambridge 剑桥大学	11/2013
Prof Ngaiming Mok 莫毅明教授	The University of Hong Kong 香港大学	11/2010
Prof Xiaoqing Pan 潘晓晴教授	University of California, Irvine 加州大学尔湾分校	11/2013
Prof Terence Chuen Wai Poon 潘全威教授	University of Macau 澳门大学	2/2012
Prof Liqun Qi 祁力群教授	The Hong Kong Polytechnic University 香港理工大学	2/2014
Prof Chi-wang Shu 舒其望教授	Brown University 布朗大学	7/2014
Prof C K Shum 沈嗣钧教授	The Ohio State University 俄亥俄州立大学	11/2011
Prof Ben-zhong Tang 唐本忠教授	The Hong Kong University of Science and Technology 香港科技大学	5/2012
Prof Zidan Wang 汪子丹教授	The University of Hong Kong 香港大学	11/2012
Prof Raymond Wai-yeung Wong 黄维扬教授	Hong Kong Baptist University 香港浸会大学	2/2012
Prof Teng-fong Wong 黄庭芳教授	The Chinese University of Hong Kong 香港中文大学	2/2013
Prof Wing-tak Wong 黄永德教授	The Hong Kong Polytechnic University 香港理工大学	2/2012
Prof Keqing Xia 夏克青教授	The Chinese University of Hong Kong 香港中文大学	2/2013
Prof Yushan Yan 严玉山教授	University of Delaware 特拉华大学	1/2015
Prof Dan Yang 杨丹教授	The University of Hong Kong 香港大学	11/2011
Prof Tong Yang 杨彤教授	City University of Hong Kong 香港城市大学	10/2009

Appendix C: Committee/Panel Membership 2014/15
附录 C：委员会／学科小组 2014/15 年度成员名单

Panel Member 学科小组成员	Institution 所属机构	Appointed in (Month/Year) 委任于(月/年)
Prof Jimmy Chai-mei Yu 余济美教授	The Chinese University of Hong Kong 香港中文大学	10/2009
Prof Tian Cheng Zhang 张天成教授	University of Nebraska-Lincoln 内布拉斯加大学林肯分校	2/2014
Prof Ding-xuan Zhou 周定轩教授	City University of Hong Kong 香港城市大学	11/2012
Prof Lixing Zhu 朱力行教授	Hong Kong Baptist University 香港浸会大学	11/2012

Appendix C: Committee/Panel Membership 2014/15 附录 C：委员会／学科小组 2014/15 年度成员名单

Collaborative Research Fund Committee

协作研究金委员会

Committee Member 委员会成员	Institution 所属机构	Appointed in (Month/Year) 委任于(月/年)
Prof Edward Sze-shing Yeung (Chairman) 杨仕成教授 (主席)	Iowa State University 爱荷华州立大学	7/2014
Prof Eddy FY Liew (Chairman) 刘富友教授 (主席)	University of Glasgow 格拉斯哥大学	7/2013 (until 6/2014)
Prof Kai-nan An 安介南教授	Mayo Clinic College of Medicine 梅约诊所医学中心	5/2014
Prof Rudolf Bauer	Karl-Franzens-Universitaet Graz 格拉茨大学	5/2014
Prof Adrian Bejan	Duke University 杜克大学	4/2014
Prof David Bellinger	Boston Children's Hospital 波士顿儿童医院	5/2014
Prof Ben Berkhout	University of Amsterdam 阿姆斯特丹大学	5/2014
Prof Chris Berry 裴开瑞教授	King's College London 伦敦国王学院	7/2012
Prof Ralf Bundschuh	The Ohio State University 俄亥俄州立大学	5/2014
Prof Louis KC Chan 陈国器教授	University of Illinois at Urbana-Champaign 伊利诺大学厄巴纳-香槟分校	7/2013
Prof Moses HW Chan 陈鸿渭教授	The Pennsylvania State University 宾夕法尼亚州立大学	7/2013
Prof Ken P Chong 张建平教授	The George Washington University 乔治华盛顿大学	4/2014
Prof Kai-wing Chow 周启荣教授	University of Illinois at Urbana-Champaign 伊利诺大学厄巴纳-香槟分校	4/2014
Prof Chih-chang Chu	Cornell University 康奈尔大学	5/2014
Prof Yip-wah Chung, BBS 锺业华教授, BBS	Northwestern University 西北大学	7/2013
Prof Paul Clark	University of Auckland 奥克兰大学	7/2014

Appendix C: Committee/Panel Membership 2014/15 附录 C：委员会／学科小组 2014/15 年度成员名单

Committee Member 委员会成员	Institution 所属机构	Appointed in (Month/Year) 委任于(月/年)
Prof Anne Cooke	University of Cambridge 剑桥大学	7/2013
Prof Yang Dan 丹扬教授	University of California, Berkeley 加州大学柏克莱分校	5/2014
Prof C Cindy Fan 范芝芬教授	University of California, Los Angeles 加州大学洛杉矶分校	4/2014
Prof Xiaohua Gong	University of California Berkeley 加州大学柏克莱分校	5/2014
Prof Min Han 韩珉教授	University of Colorado at Boulder 科罗拉多大学波尔得分校	5/2014
Dr Zhigang He 何志刚博士	Harvard University 哈佛大学	5/2014
Prof Joanna Ho 何莉芸教授	University of California, Irvine 加州大学尔湾分校	7/2012
Prof Ronnie Po-chia Hsia 夏伯嘉教授	The Pennsylvania State University 宾夕法尼亚州立大学	7/2013
Dr Chi-chung Hui	University of Toronto 多伦多大学	5/2014
Prof William N Hunter	University of Dundee 邓迪大学	5/2014
Prof H V Jagadish	University of Michigan 密歇根大学	4/2014
Prof Anil K Jain	Michigan State University 密歇根州立大学	4/2014
Prof Wei Jia 贾伟教授	University of Hawaii at Monoa 夏威夷大学马诺阿分校	5/2014
Prof Nina Lam 林绍颜教授	Louisiana State University 路易斯安那州立大学	4/2014
Dr William Langston	Marine Biological Association of the United Kingdom 英国海洋生物学协会	5/2014
Prof Ping-yee Law 罗秉义教授	University of Minnesota 明尼苏达大学	4/2014
Prof Chao-jun Li 李朝军教授	McGill University 麦基尔大学	7/2013
Prof Wai-yee Li 李惠仪教授	Harvard University 哈佛大学	4/2014
Prof Wenbin Lin 林文斌教授	The University of Chicago 芝加哥大学	5/2014

Appendix C: Committee/Panel Membership 2014/15 附录 C：委员会／学科小组 2014/15 年度成员名单

Committee Member 委员会成员	Institution 所属机构	Appointed in (Month/Year) 委任于(月/年)
Prof Matthias Löhr	Karolinska University Hospital 卡罗琳大学医院	5/2014
Prof Fanxin Long	Washington University 华盛顿大学	5/2014
Prof Steven G Louie 雷干城教授	University of California, Berkeley 加州大学柏克莱分校	4/2014
Prof Maria Masucci	Karolinska Institutet 卡罗琳斯医学院	5/2014
Prof B Paul Morgan	Cardiff University 卡迪夫大学	5/2014
Prof Peter Petraitis	University of Pennsylvania 宾夕法尼亚大学	5/2014
Prof Maria M Piñango	Yale University 耶鲁大学	4/2014
Prof Roger H Reeves	Johns Hopkins University 约翰斯·霍普金斯大学	5/2014
Prof Alan B Rickinson	The University of Birmingham 伯明翰大学	5/2014
Prof Jerry W Shay	University of Texas Southwestern Medical Center 德克萨斯州大学西南医学中心	5/2014
Prof Brian G Spratt	Imperial College London 伦敦帝国学院	5/2014
Prof Eric J Stanbridge	University of California, Irvine 加州大学尔湾分校	5/2014
Prof Andrew J Szeri	University of California, Berkeley 加州大学柏克莱分校	7/2012
Prof Adrian Thrasher	University College London 伦敦大学学院	5/2014
Prof Bosco S Tjan 曾学锋教授	University of Southern California 南加州大学	4/2014
Prof Rocky S Tuan 段崇智教授	University of Pittsburgh 匹兹堡大学	7/2013
Prof Dazhi Wang 王大之教授	Harvard University 哈佛大学	5/2014
Prof Zhiyong Wang 王志勇教授	Stanford University 史丹福大学	5/2014
Prof Lynn T White III 白霖教授	Princeton University 普林斯顿大学	7/2012

Appendix C: Committee/Panel Membership 2014/15
附录 C：委员会／学科小组 2014/15 年度成员名单

Committee Member 委员会成员	Institution 所属机构	Appointed in (Month/Year) 委任于(月/年)
Prof Susan Wong	Cardiff University 卡迪夫大学	5/2014
Prof Wing-hung Wong 王永雄教授	Stanford University 史丹福大学	7/2013
Prof William M Worek	Stony Brook University 石溪大学	4/2014
Prof Paul KL Yu 余劫离教授	University of California, San Diego 加州大学圣地牙哥分校	7/2012
Prof Lixia Zhang 张丽霞教授	University of California, Los Angeles 加州大学洛杉矶分校	6/2014
Prof Tian C Zhang 张天成教授	University of Nebraska-Lincoln 内布拉斯加大学林肯分校	5/2014

Appendix C: Committee/Panel Membership 2014/15 附录 C：委员会／学科小组 2014/15 年度成员名单

Major Projects Steering Committee

大型研究项目督导委员会

Committee Member 委员会成员	Institution 所属机构	Appointed in (Month/Year) 委任于(月/年)
Prof Yip-wah Chung, BBS (Chairman) 锺业华教授·BBS (主席)	Northwestern University 西北大学	8/2011
Prof Louis KC Chan 陈国器教授	University of Illinois at Urbana-Champaign 伊利诺大学厄巴纳-香槟分校	8/2011
Prof Ronnie Po-chia Hsia 夏伯嘉教授	The Pennsylvania State University 宾夕法尼亚州立大学	8/2011
Prof Chao-jun Li 李朝军教授	McGill University 麦基尔大学	7/2014
Prof Rocky S Tuan 段崇智教授	University of Pittsburg 匹兹堡大学	7/2014
Prof Edward Sze-shing Yeung 杨仕成教授	Iowa State University 爱荷华州立大学	8/2011
Prof Paul KL Yu 余劫离教授	University of California, San Diego 加州大学圣地牙哥分校	12/2012

Appendix C: Committee/Panel Membership 2014/15 附录 C：委员会／学科小组 2014/15 年度成员名单

Theme-based Research Scheme Selection Panel

主题研究计划遴选小组

Committee Member 委员会成员	Institution 所属机构	Appointed in (Month/Year) 委任于(月/年)
Prof Yip-wah Chung, BBS (Chairman) 锺业华教授 · BBS (主席)	Northwestern University 西北大学	8/2011
Prof Margaret Bell	Newcastle University 英国新堡大学	7/2014
Dr Peter Brewer	Monterey Bay Aquarium Research Institute 蒙特瑞湾海洋研究所	9/2011
Prof Louis KC Chan 陈国器教授	University of Illinois at Urbana-Champaign 伊利诺大学厄巴纳-香槟分校	9/2011
Prof Rowland W Chang 张慰堂教授	Northwestern University 西北大学	7/2014
Dr Nim-kwan Cheung 张念坤博士	Ross Sciences Limited 诺资有限公司	9/2011
Prof Anne Cooke	University of Cambridge 剑桥大学	9/2011
Prof Hau L Lee 李效良教授	Stanford University 史丹福大学	9/2011
Prof Eddy FY Liew 刘富友教授	University of Glasgow 格拉斯哥大学	9/2011
Prof Phillip Phan 潘庆财教授	Johns Hopkins University 约翰斯·霍普金斯大学	9/2011
Prof Roger H Reeves	Johns Hopkins University 约翰斯·霍普金斯大学	7/2014
Prof Anne Rutkowski	Tilburg University 蒂尔堡大学	7/2014
Prof Rocky S Tuan 段崇智教授	University of Pittsburg 匹兹堡大学	7/2014
Dr Allen Webb	McKinsey Company 麦肯锡公司	7/2014
Prof William M Worek	Stony Brook University 石溪大学	7/2014
Prof Edward Sze-shing Yeung 杨仕成教授	Iowa State University 爱荷华州立大学	9/2011
Prof Paul KL Yu 余劫离教授	University of California, San Diego 加州大学圣地牙哥分校	9/2011

Appendix C: Committee/Panel Membership 2014/15 附录 C：委员会／学科小组 2014/15 年度成员名单

Steering Committee on Competitive Research Funding for the Self-financing Degree Sector 自资学位界别竞逐研究资助督导委员会

Committee Member 委员会成员	Institution 所属机构	Appointed in (Month/Year) 委任于(月/年)
Prof Benjamin W Wah (Chairman) 华云生教授 (主席)	The Chinese University of Hong Kong 香港中文大学	10/2013
Prof Terry Kit-fong Au 区洁芳教授	The University of Hong Kong 香港大学	10/2013
Prof Theodore Tien-yiu Chen 陈天佑教授	Hong Kong Shue Yan University 香港树仁大学	10/2014
Prof Mette Hjort 乐美德教授	Lingnan University 岭南大学	10/2013
Prof Kin-chung Ho, BBS 何建宗教授 · BBS	The Open University of Hong Kong 香港公开大学	10/2013
Prof Helen Mei-ling Meng 蒙美玲教授	The Chinese University of Hong Kong 香港中文大学	10/2013
Mr Brian Sai-hung Lo, JP (Ex-officio Member) 卢世雄先生 · JP (当然成员)	Education Bureau, HKSAR Government 香港特别行政区 · 教育局	07/2014

Appendix C: Committee/Panel Membership 2014/15 附录 C：委员会／学科小组 2014/15 年度成员名单

Assessment Panel for Competitive Research Funding Schemes for the Local Self-financing Degree Sector 供本地自资学位界别角逐研究资助计划评审委员会

Panel Member 评审委员	Institution 所属机构	Appointed in (Month/Year) 委任于(月/年)
Prof Terry Kit-fong Au (Chairman and Subject Convenor (Humanities and Social Sciences)) 区洁芳教授 (主席及学科召集人(人文 学及社会科学))	The University of Hong Kong 香港大学	05/2014
Prof Patrick Yam-keung Chau (Subject Convenor (Business Studies)) 周荫强教授 (学科召集人(商学))	The University of Hong Kong 香港大学	05/2014
Prof Frank Shun-cheng Lee (Subject Convenor (Physical Sciences)) 李顺诚教授 (学科召集人(自然科学))	The Hong Kong Polytechnic University 香港理工大学	05/2014
Prof Arthur Fuk-tat Mak (Subject Convenor (Biology & Medicine)) 麦福达教授 (学科召集人(生物学及医 学))	The Chinese University of Hong Kong 香港中文大学	05/2014
Prof Helen Mei-ling Meng (Subject Convenor (Engineering)) 蒙美玲教授 (学科召集人(工程学))	The Chinese University of Hong Kong 香港中文大学	05/2014
Prof Hok-yin Chan 陈学然教授	City University of Hong Kong 香港城市大学	03/2015
Prof Honglin Chen 陈鸿霖教授	The University of Hong Kong 香港大学	03/2015
Prof Cecilia Cheng 郑思雅教授	The University of Hong Kong 香港大学	03/2015
Prof Agnes Cheng-shing Cheng 郑振兴教授	The Hong Kong Polytechnic University 香港理工大学	03/2015
Prof Joanne Wai-yee Chung 锺慧仪教授	The Hong Kong Institute of Education 香港教育学院	03/2015

Appendix C: Committee/Panel Membership 2014/15 附录 C：委员会／学科小组 2014/15 年度成员名单

Panel Member 评审委员	Institution 所属机构	Appointed in (Month/Year) 委任于(月/年)
Prof Joseph Kwun-wing Fung 冯观荣教授	Hong Kong Baptist University 香港浸会大学	03/2015
Prof Liqiang Huang 黄力强教授	The Chinese University of Hong Kong 香港中文大学	03/2015
Prof Paul Chi-kong Kwok 郭始刚教授	The Open University of Hong Kong 香港公开大学	05/2014
Prof Julie Juan Li 李娟教授	City University of Hong Kong 香港城市大学	03/2015
Prof Qing Li 李青教授	City University of Hong Kong 香港城市大学	03/2015
Prof Thomas Wai-hung Lo 劳伟雄教授	The Hong Kong Polytechnic University 香港理工大学	03/2015
Prof Qin Lu, MH 陆勤教授, MH	The Hong Kong Polytechnic University 香港理工大学	03/2015
Prof Joshua Ka-ho Mok 莫家豪教授	The Hong Kong Institute of Education 香港教育学院	05/2014
Prof Mu-chou Poo 蒲慕州教授	The Chinese University of Hong Kong 香港中文大学	05/2014
Prof Kenneth Kuen-fung Sin 冼权锋教授	The Hong Kong Institute of Education 香港教育学院	03/2015
Prof Catherine Tien-lun Sun 孙天伦教授	Hong Kong Shue Yan University 香港树仁大学	05/2014
Prof Xin Wang 王鑫教授	The University of Hong Kong 香港大学	03/2015
Prof Ellick Kin-fai Wong 黄健辉教授	The Hong Kong University of Science and Technology 香港科技大学	03/2015
Prof Jiang Xu 徐江教授	The Chinese University of Hong Kong 香港中文大学	03/2015

Appendix C: Committee/Panel Membership 2014/15 附录 C：委员会／学科小组 2014/15 年度成员名单

Hong Kong PhD Fellowship Scheme Selection Panels 香港博士研究生奖学金计划遴选小组

Humanities, Social Sciences and Business Studies 人文学、社会科学及商科		
Panel Member 遴选小组成员	Institution 所属机构	Appointed in (Month/Year) 委任于(月/年)
Prof Andrew Walder (Chairman) (主席)	Stanford University 史丹福大学	12/2013
Prof Hervé Ascensio	University of Paris 1 巴黎第一大学	12/2013
Prof Maurice Benayoun 莫奔教授	City University of Hong Kong 香港城市大学	12/2013
Prof Iain Borden	University College London 伦敦大学学院	12/2013
Prof Alister Cumming	University of Toronto 多伦多大学	12/2013
Prof Richard Davis 戴仁柱教授	Lingnan University 岭南大学	12/2013
Prof Joanna Ho 何莉芸教授	University of California, Irvine 加州大学尔湾分校	12/2013
Prof Vernon Ning Hsu 徐宁教授	The Chinese University of Hong Kong 香港中文大学	12/2013
Prof Karen Laidler	The University of Hong Kong 香港大学	12/2013
Prof Stephen Kim	Iowa State University 爱荷华州立大学	12/2013
Prof Maxwell King	Monash University 蒙纳士大学	12/2013
Prof John Logan	Brown University 布朗大学	12/2013
Prof Melanie Manion	University of Wisconsin-Madison 威斯康辛大学麦迪逊分校	12/2013
Prof Kingshuk Sinha	University of Minnesota 明尼苏达大学	12/2013
Prof Colin Sparks	Hong Kong Baptist University 香港浸会大学	12/2013
Prof Wing-chuen Suen 孙永泉教授	The University of Hong Kong 香港大学	12/2013

Appendix C: Committee/Panel Membership 2014/15
附录 C：委员会／学科小组 2014/15 年度成员名单

Panel Member 遴选小组成员	Institution 所属机构	Appointed in (Month/Year) 委任于(月/年)
Prof Andrew Tolmie	University of London 伦敦大学	12/2013
Prof Wilson Hing-sang Tong 唐宪生教授	The Hong Kong Polytechnic University 香港理工大学	12/2013
Prof Wen-chung Wang 王文中教授	The Hong Kong Institute of Education 香港教育学院	12/2013
Prof Fulong Wu 吴缚龙教授	University College London 伦敦大学学院	12/2013

Appendix C: Committee/Panel Membership 2014/15 附录 C：委员会／学科小组 2014/15 年度成员名单

Hong Kong PhD Fellowship Scheme Selection Panels

香港博士研究生奖学金计划遴选小组

Science, Medicine, Engineering and Technology 科学、医学、工程及科技		
Panel Member 遴选小组成员	Institution 所属机构	Appointed in (Month/Year) 委任于(月/年)
Prof Andrew Szeri (Chairman) (主席)	University of California, Berkeley 加州大学柏克莱分校	12/2013
Dr Ilesanmi Adesida	University of Illinois at Urbana-Champaign 伊利诺大学厄巴纳-香槟分校	12/2013
Prof Iris Benzie	The Hong Kong Polytechnic University 香港理工大学	12/2013
Prof Jian-nong Cao 曹建农	The Hong Kong Polytechnic University 香港理工大学	12/2013
Prof Paul Kim-ho Chu 朱剑豪教授	City University of Hong Kong 香港城市大学	12/2013
Prof Joe Dong 董朝阳教授	University of Sydney 雪梨大学	12/2013
Prof Amr Elnashai	The Pennsylvania State University 宾夕凡尼亚州立大学	12/2013
Prof Robin Garrell	University of California, Los Angeles 加州大学洛杉矶分校	12/2013
Prof Mohan Kankanhalli	National University of Singapore 新加坡国立大学	12/2013
Prof Chris Yun-fai Lau 刘润辉教授	University of California, San Francisco 加州大学旧金山分校	12/2013
Prof Vincent Lau 刘坚能教授	The Hong Kong University of Science and Technology 香港科技大学	12/2013
Prof Chun Liu 柳春教授	The Pennsylvania State University 宾夕凡尼亚州立大学	12/2013
Prof Peter Markowich	University of Cambridge 剑桥大学	12/2013
Prof Gad Marom	The Hebrew University of Jerusalem 耶路撒冷希伯来大学	12/2013
Prof William Ireland Milne	University of Cambridge 剑桥大学	12/2013
Prof Bradley Nelson	ETH Zurich 苏黎世联邦理工学院	12/2013

Appendix C: Committee/Panel Membership 2014/15 附录 C：委员会／学科小组 2014/15 年度成员名单

Panel Member 遴选小组成员	Institution 所属机构	Appointed in (Month/Year) 委任于(月/年)
Prof Kwok-po Ng 吴国宝教授	Hong Kong Baptist University 香港浸会大学	12/2013
Prof Chi-wang Shu 舒其望教授	Brown University 布朗大学	12/2013
Prof Richard Strugnell	The University of Melbourne 墨尔本大学	12/2013
Prof Xiaoou Tang 汤晓鸥教授	The Chinese University of Hong Kong 香港中文大学	12/2013
Prof Danny Hin-kwok Tsang 曾宪国教授	The Hong Kong University of Science and Technology 香港科技大学	12/2013
Prof Michel Van Hove	Hong Kong Baptist University 香港浸会大学	12/2013
Prof Tao Wang 王韬教授	The Hong Kong Polytechnic University 香港理工大学	12/2013
Prof Chris Kong-chu Wong 黄港住教授	Hong Kong Baptist University 香港浸会大学	12/2013
Prof Vivian Wing-wah Yam 任咏华教授	The University of Hong Kong 香港大学	12/2013
Prof Moshe Zukerman	City University of Hong Kong 香港城市大学	12/2013

Appendix C: Committee/Panel Membership 2014/15 附录 C：委员会／学科小组 2014/15 年度成员名单

Disciplinary Committee

纪律委员会

Committee Member 委员会成员	Institution 所属机构	Appointed in (Month/Year) 委任于(月/年)
Prof Albert F Yee (Chairman) 余凡教授 (主席)	University of California, Irvine, U.S.A. 美国加州大学尔湾分校	2/2015
Prof Chris Berry 裴开瑞教授	King's College London, U.K. 英国伦敦国王学院	2/2015
Dr Nim-kwan Cheung 张念坤博士	Ross Sciences Limited 诺资有限公司	2/2015
Prof Guoping Feng 冯国平教授	Massachusetts Institute of Technology, U.S.A. 美国麻省理工学院	2/2015
Prof Joanna Ho 何莉芸教授	University of California, Irvine, U.S.A. 美国加州大学尔湾分校	2/2015
Mr Allen Kam-sing Ma 马锦星先生	Hong Kong Science & Technology Parks Corporation 香港科技园公司	2/2015
Prof Jay Siegel	Tianjin University 天津大学	2/2015

Appendix D: Summary of Funding for New Research Grant Projects 附录 D：新增研究项目拨款摘要

(a) Funding for new research grant projects by source of funding 各院校新增研究项目所得拨款

Institution 院校名称	Year 年度	Block Grant 整体补助金		Other UGC Grants 教资会其他补助金		RGC Direct 研资局直接拨款		Other RGC Grants 研资局其他补助金		Other Sources 其他资助来源		Total 合计		Amt. per project 每个项目拨款 HK\$'000 千港元
		No. 数目	Amt. 金额	No. 数目	Amt. 金额	No. 数目	Amt. 金额	No. 数目	Amt. 金额	No. 数目	Amt. 金额	No. 数目	Amt. 金额	
			HK\$m 百万港元		HK\$m 百万港元		HK\$m 百万港元		HK\$m 百万港元		HK\$m 百万港元		HK\$m 百万港元	
CityU 香港城市大学	2013/14	262	61.1	1	1.2	-	-	166	100.3	108	65.3	537	227.9	424
	2012/13	322	73.8	-	1.0	-	-	134	81.5	101	76.5	557	232.8	418
	% change 增减百分率	-19%	-17%	-	+23%	-	-	+24%	+23%	+7%	-15%	-4%	-2%	+2%
HKBU 香港浸会大学	2013/14	154	19.8	-	2.9	3	0.3	72	35.7	18	17.2	247	75.9	307
	2012/13	146	15.9	-	0.6	5	0.2	83	52.3	18	14.1	252	83.1	330
	% change 增减百分率	+5%	+25%	-	+376%	-40%	+52%	-13%	-32%	-	+22%	-2%	-9%	-7%
LU 岭南大学	2013/14	30	1.3	-	-	8	0.8	17	7.8	3	1.5	58	11.5	198
	2012/13	50	3.1	1	1.2	-	-	15	5.7	2	0.1	68	10.0	147
	% change 增减百分率	-40%	-58%	-100%	-100%	-	-	+13%	+37%	+50%	+2851%	-15%	+15%	+35%
CUHK 香港中文大学	2013/14	805	48.2	1	33.7	-	-	246	219.1	284	199.8	1 336	500.8	375
	2012/13	801	142.2	-	64.8	-	-	216	199.8	259	173.9	1 276	580.8	455
	% change 增减百分率	*	-66%	-	-48%	-	-	+14%	+10%	+10%	+15%	+5%	-14%	-18%
HKIEd 香港教育学院	2013/14	105	9.0	1	0.1	24	5.1	29	18.8	21	9.6	180	42.5	236
	2012/13	104	7.9	6	0.5	16	0.4	19	12.4	13	11.0	158	32.2	204
	% change 增减百分率	+1%	+13%	-83%	-88%	+50%	+1212%	+53%	+52%	+62%	-13%	+14%	+32%	+16%
PolyU 香港理工大学	2013/14	398	96.2	2	1.6	-	-	176	104.2	132	75.0	708	277.0	391
	2012/13	368	57.5	-	0.4	-	-	138	94.3	153	121.7	659	273.9	416
	% change 增减百分率	+8%	+67%	-	+317%	-	-	+28%	+11%	-14%	-38%	+7%	+1%	-6%
HKUST 香港科技大学	2013/14	276	65.2	17	24.3	-	-	201	179.2	158	153.7	652	422.4	648
	2012/13	256	57.3	17	14.5	4	0.1	167	153.0	114	233.6	558	458.5	822
	% change 增减百分率	+8%	+14%	-	+67%	-100%	-100%	+20%	+17%	+39%	-34%	+17%	-8%	-21%
HKU 香港大学	2013/14	632	59.6	168	247.0	7	0.8	273	209.0	368	687.4	1 448	1,203.8	831
	2012/13	543	55.4	20	7.6	-	-	260	237.4	381	547.0	1 204	847.3	704
	% change 增减百分率	+16%	+8%	+740%	+3145%	-	-	+5%	-12%	-3%	+26%	+20%	+42%	+18%
Total 总计	2013/14	2 662	360.4	190	310.8	42	7.0	1 180	874.2	1 092	1,209.3	5 166	2,761.7	535
	2012/13	2 590	413.0	44	90.6	25	0.7	1 032	836.3	1 041	1,177.9	4 732	2,518.5	532
	% change 增减百分率	+3%	-13%	+332%	+243%	+68%	+870%	+14%	+5%	+5%	+3%	+9%	+10%	*

(b) Funding for new research grant projects from "other sources" 各院校新增研究项目其他资助来源所得拨款

Institution 院校名称	Year 年度	HK Charities 香港慈善团体		HK Government 香港政府		HK Industry 香港工商界		HK Others 本地其他资助来源		Non-HK 海外资助来源		Total 合计	
		No. 数目	Amt. 金额	No. 数目	Amt. 金额	No. 数目	Amt. 金额	No. 数目	Amt. 金额	No. 数目	Amt. 金额	No. 数目	Amt. 金额
			HK\$m 百万港元		HK\$m 百万港元		HK\$m 百万港元		HK\$m 百万港元		HK\$m 百万港元		HK\$m 百万港元
CityU 香港城市大学	2013/14	3	3.2	25	39.4	1	8.3	69	12.1	10	2.4	108	65.3
	2012/13	7	4.0	26	51.6	1	4.0	64	15.7	3	1.3	101	76.5
	% change 增减百分率	-57%	-21%	-4%	-24%	-	+107%	+8%	-23%	+233%	+86%	+7%	-15%
HKBU 香港浸会大学	2013/14	-	-	15	15.4	-	0.7	1	0.3	2	0.7	18	17.2
	2012/13	1	2.0	11	8.6	-	-	1	2.4	5	1.0	18	14.1
	% change 增减百分率	-100%	-100%	+36%	+79%	-	-	-	-86%	-60%	-33%	-	+22%
LU 岭南大学	2013/14	-	-	3	1.5	-	-	-	-	-	-	3	1.5
	2012/13	-	-	2	0.1	-	-	-	-	-	-	2	0.1
	% change 增减百分率	-	-	+50%	+2851%	-	-	-	-	-	-	+50%	+2851%
CUHK 香港中文大学	2013/14	37	57.3	97	120.8	12	1.4	125	9.9	13	10.4	284	199.8
	2012/13	49	70.7	68	65.7	12	12.4	113	8.4	17	16.8	259	173.9
	% change 增减百分率	-24%	-19%	+43%	+84%	-	-89%	+11%	+18%	-24%	-38%	+10%	+15%
HKIEd 香港教育学院	2013/14	-	-	11	8.9	-	-	10	0.7	-	-	21	9.6
	2012/13	-	-	10	11.0	-	-	3	0.1	-	-	13	11.0
	% change 增减百分率	-	-	+10%	-19%	-	-	+233%	+1175%	-	-	+62%	-13%
PolyU 香港理工大学	2013/14	8	4.1	42	28.0	7	3.8	58	23.7	17	15.4	132	75.0
	2012/13	9	34.4	32	33.5	8	3.2	79	27.8	25	22.9	153	121.7
	% change 增减百分率	-11%	-88%	+31%	-17%	-13%	+19%	-27%	-15%	-32%	-33%	-14%	-38%
HKUST 香港科技大学	2013/14	13	1.1	35	54.1	6	12.2	25	14.8	79	71.6	158	153.7
	2012/13	12	6.8	30	82.5	8	31.1	6	31.3	58	81.8	114	233.6
	% change 增减百分率	+8%	-84%	+17%	-34%	-25%	-61%	+317%	-53%	+36%	-13%	+39%	-34%
HKU 香港大学	2013/14	114	344.4	178	238.0	23	35.5	28	49.5	25	19.9	368	687.4
	2012/13	103	211.1	136	122.7	37	112.7	70	79.4	35	21.1	381	547.0
	% change 增减百分率	+11%	+63%	+31%	+94%	-38%	-68%	-60%	-38%	-29%	-6%	-3%	+26%
Total 总计	2013/14	175	410.0	406	506.0	49	61.9	316	111.1	146	120.4	1 092	1,209.3
	2012/13	181	329.0	315	375.6	66	163.4	336	165.0	143	144.9	1 041	1,177.9
	% change 增减百分率	-3%	+25%	+29%	+35%	-26%	-62%	-6%	-33%	+2%	-17%	+5%	+3%

Notes: 1. New research grant projects are projects that have been awarded to start in the specified year.

2. Including the amount of funding granted by the funding authorities but not yet released for research projects.

3. - denotes nil.

4. * denotes within $\pm 0.5\%$.

5. Figures may not add up to the corresponding totals due to rounding.

注：1. 新增研究项目为于指定年度开始的获资助项目。

2. 数字包括有关机构已批核但未发放的资助款额。

3. - 表示零。

4. * 表示增减在 $\pm 0.5\%$ 以内。

5. 由于四舍五入，数字总和可能与相对的总计略有出入。

Appendix E: Summary of Funding for On-going Research Grant Projects 附录 E：进展中研究项目拨款摘要

(a) Funding for on-going research grant projects by source of funding 各院校进展中研究项目所得拨款

Institution 院校名称	Year 年度	Block Grant 整体补助金		Other UGC Grants 教委会其他补助金		RGC Direct 研资局直接拨款		Other RGC Grants 研资局其他补助金		Other Sources 其他资助来源		Total 合计		Amt. per project 每个项目拨款
		No. 数目	Amt. 金额	No. 数目	Amt. 金额	No. 数目	Amt. 金额	No. 数目	Amt. 金额	No. 数目	Amt. 金额	No. 数目	Amt. 金额	
			HK\$m 百万港元		HK\$m 百万港元		HK\$m 百万港元		HK\$m 百万港元		HK\$m 百万港元		HK\$m 百万港元	
CityU 香港城市大学	2013/14	853	352.2	5	48.0	64	10.6	537	339.2	320	256.6	1 779	1,006.6	566
	2012/13	792	327.6	4	44.4	118	20.0	488	303.6	249	222.6	1 651	918.2	556
	% change 增减百分率	+8%	+8%	+25%	+8%	-46%	-47%	+10%	+12%	+29%	+15%	+8%	+10%	+2%
HKBU 香港浸会大学	2013/14	484	70.7	-	20.1	112	8.5	241	150.2	80	71.8	917	321.3	350
	2012/13	418	59.8	1	14.8	157	11.8	215	140.4	66	55.2	857	281.9	329
	% change 增减百分率	+16%	+18%	-100%	+36%	-29%	-28%	+12%	+7%	+21%	+30%	+7%	+14%	+7%
LU 岭南大学	2013/14	73	4.1	1	1.2	37	3.1	44	17.5	5	1.9	160	27.7	173
	2012/13	70	3.6	2	4.7	59	4.6	33	13.2	5	0.7	169	26.8	159
	% change 增减百分率	+4%	+16%	-50%	-75%	-37%	-33%	+33%	+32%	-	+165%	-5%	+3%	+9%
CUHK 香港中文大学	2013/14	1 453	423.5	8	226.7	128	7.1	755	753.9	764	922.4	3 108	2,333.6	751
	2012/13	1 166	422.2	9	187.1	403	21.2	704	672.8	728	990.5	3 010	2,293.9	762
	% change 增减百分率	+25%	*	-11%	+21%	-68%	-67%	+7%	+12%	+5%	-7%	+3%	+2%	-1%
HKIEd 香港教育学院	2013/14	215	18.3	4	8.2	39	6.0	66	45.0	39	31.2	363	108.6	299
	2012/13	182	16.2	7	0.6	57	4.3	49	36.2	26	30.2	321	87.5	273
	% change 增减百分率	+18%	+12%	-43%	+1280%	-32%	+41%	+35%	+24%	+50%	+3%	+13%	+24%	+10%
PolyU 香港理工大学	2013/14	1 433	395.2	18	56.2	309	31.5	605	396.5	546	458.8	2 911	1,338.1	460
	2012/13	1 103	302.7	19	57.0	333	33.8	454	306.4	449	514.4	2 358	1,214.3	515
	% change 增减百分率	+30%	+31%	-5%	-1%	-7%	-7%	+33%	+29%	+22%	-11%	+23%	+10%	-11%
HKUST 香港科技大学	2013/14	872	211.7	58	61.6	210	17.4	599	575.6	506	666.3	2 245	1,532.6	683
	2012/13	775	296.5	50	39.6	270	23.5	537	518.0	445	655.6	2 077	1,533.1	738
	% change 增减百分率	+13%	-29%	+16%	+55%	-22%	-26%	+12%	+11%	+14%	+2%	+8%	*	-8%
HKU 香港大学	2013/14	1 539	345.9	611	1,501.0	149	12.7	896	944.5	2 699	5,533.1	5 894	8,337.4	1,415
	2012/13	1 289	301.2	489	1,188.4	306	22.4	825	828.2	2 479	4,603.1	5 388	6,943.3	1,289
	% change 增减百分率	+19%	+15%	+25%	+26%	-51%	-43%	+9%	+14%	+9%	+20%	+9%	+20%	+10%
Total 总计	2013/14	6 922	1,821.6	705	1,922.9	1 048	96.9	3 743	3,222.5	4 959	7,942.1	17 377	15,006.0	864
	2012/13	5 795	1,729.8	581	1,536.5	1 703	141.6	3 305	2,818.9	4 447	7,072.3	15 831	13,299.1	840
	% change 增减百分率	+19%	+5%	+21%	+25%	-38%	-32%	+13%	+14%	+12%	+12%	+10%	+13%	+3%

(b) Funding for on-going research grant projects from "other sources" 各院校进展中研究项目其他资助来源所得拨款

Institution 院校名称	Year 年度	HK Charities 香港慈善团体		HK Government 香港政府		HK Industry 香港工商界		HK Others 本地其他资助来源		Non-HK 海外资助来源		Total 合计	
		No. 数目	Amt. 金额	No. 数目	Amt. 金额	No. 数目	Amt. 金额	No. 数目	Amt. 金额	No. 数目	Amt. 金额	No. 数目	Amt. 金额
			HK\$m 百万港元		HK\$m 百万港元		HK\$m 百万港元		HK\$m 百万港元		HK\$m 百万港元		HK\$m 百万港元
CityU 香港城市大学	2013/14	12	13.7	88	136.3	12	31.8	191	64.4	17	10.3	320	256.6
	2012/13	9	10.5	82	123.6	13	25.9	136	54.3	9	8.4	249	222.6
	% change 增减百分率	+33%	+31%	+7%	+10%	-8%	+23%	+40%	+19%	+89%	+23%	+29%	+15%
HKBU 香港浸会大学	2013/14	1	5.2	45	49.2	-	1.5	24	13.3	10	2.5	80	71.8
	2012/13	1	5.8	32	34.9	-	0.8	24	11.7	9	2.0	66	55.2
	% change 增减百分率	-	-11%	+41%	+41%	-	+90%	-	+14%	+11%	+28%	+21%	+30%
LU 岭南大学	2013/14	-	-	5	1.9	-	-	-	-	-	-	5	1.9
	2012/13	-	-	5	0.7	-	-	-	-	-	-	5	0.7
	% change 增减百分率	-	-	-	+165%	-	-	-	-	-	-	-	+165%
CUHK 香港中文大学	2013/14	133	265.7	229	344.1	71	87.9	273	165.0	58	59.8	764	922.4
	2012/13	136	231.4	202	298.7	64	103.1	269	295.3	57	62.1	728	990.5
	% change 增减百分率	-2%	+15%	+13%	+15%	+11%	-15%	+1%	-44%	+2%	-4%	+5%	-7%
HKIEd 香港教育学院	2013/14	-	-	27	30.4	-	-	12	0.7	-	-	39	31.2
	2012/13	-	-	22	30.1	-	-	4	0.1	-	-	26	30.2
	% change 增减百分率	-	-	+23%	+1%	-	-	+200%	+591%	-	-	+50%	+3%
PolyU 香港理工大学	2013/14	34	90.4	104	108.6	37	16.7	293	177.4	78	65.7	546	458.8
	2012/13	29	145.0	74	121.6	34	13.8	243	171.6	69	62.3	449	514.4
	% change 增减百分率	+17%	-38%	+41%	-11%	+9%	+20%	+21%	+3%	+13%	+5%	+22%	-11%
HKUST 香港科技大学	2013/14	19	22.1	82	202.7	65	66.4	73	118.3	267	256.7	506	666.3
	2012/13	18	23.9	78	202.9	67	68.7	58	133.9	224	226.2	445	655.6
	% change 增减百分率	+6%	-8%	+5%	*	-3%	-3%	+26%	-12%	+19%	+14%	+14%	+2%
HKU 香港大学	2013/14	836	2,191.0	627	899.0	289	609.3	719	1,453.3	228	380.6	2 699	5,533.1
	2012/13	766	1,810.5	515	682.9	272	542.2	715	1,223.0	211	344.5	2 479	4,603.1
	% change 增减百分率	+9%	+21%	+22%	+32%	+6%	+12%	+1%	+19%	+8%	+10%	+9%	+20%
Total 总计	2013/14	1 035	2,588.0	1 207	1,772.3	474	813.6	1 585	1,992.5	658	775.7	4 959	7,942.1
	2012/13	959	2,227.1	1 010	1,495.4	450	754.5	1 449	1,889.9	579	705.4	4 447	7,072.3
	% change 增减百分率	+8%	+16%	+20%	+19%	+5%	+8%	+9%	+5%	+14%	+10%	+12%	+12%

Notes: 1. On-going research grant projects include all new research grant projects, projects that have not been completed prior to the specified year and projects completed within the specified year.

2. Including the amount of funding granted by the funding authorities but not yet released for research projects.

3. - denotes nil.

4. * denotes within $\pm 0.5\%$.

5. Figures may not add up to the corresponding totals due to rounding.

注：1. 进展中研究项目包括所有新增研究项目、在指定年度前未完成的项目、以及在指定年度内完成的项目。

2. 数字包括有关机构已批核但未发放的资助款额。

3. - 表示零。

4. * 表示增减在 $\pm 0.5\%$ 以内。

5. 由于四舍五入，数字总和可能与相对的总计略有出入。

Appendix F: Research Outputs by Broad Subject Area and by Institution 附录 F：按学科及院校分项的研究成果

Broad Subject Area 学科	Institution 院校名称	Total Research Outputs 研究作品总数		Refereed Research Outputs 经审阅的研究作品总数		Prizes & Awards 奖项	
		2012/13	2013/14	2012/13	2013/14	2012/13	2013/14
All subject areas 全部学科	All institutions 全部院校	25 064	26 374	18 209	19 080	818	869
	CityU 香港城市大学	3 016	3 379	2 109	2 268	73	90
	HKBU 香港浸会大学	1 561	1 673	954	1 019	13	31
	LU 岭南大学	591	574	265	309	1	3
	CUHK 香港中文大学	5 913	6 006	4 627	4 706	245	289
	HKIEd 香港教育学院	966	960	785	794	9	12
	PolyU 香港理工大学	3 926	3 680	2 544	2 232	98	44
	HKUST 香港科技大学	1 750	2 603	1 231	1 895	115	135
	HKU 香港大学	7 340	7 498	5 694	5 858	265	265
Biology & Medicine 生物学及医学	All institutions 全部院校	6 383	6 544	5 398	5 582	255	311
	CityU 香港城市大学	143	121	103	90	8	5
	HKBU 香港浸会大学	138	177	108	119	2	8
	CUHK 香港中文大学	2 363	2 267	2 123	2 049	100	162
	HKIEd 香港教育学院	16	3	12	3	0	-
	PolyU 香港理工大学	378	370	251	270	10	10
	HKUST 香港科技大学	165	232	99	159	13	3
	HKU 香港大学	3 181	3 374	2 702	2 893	122	123
Physical Sciences 自然科学	All institutions 全部院校	2 324	2 562	1 590	1 779	85	69
	CityU 香港城市大学	483	511	306	329	8	6
	HKBU 香港浸会大学	140	119	120	97	5	6
	CUHK 香港中文大学	439	468	297	328	28	14
	HKIEd 香港教育学院	44	66	38	55	-	1
	PolyU 香港理工大学	267	257	213	207	9	3
	HKUST 香港科技大学	396	541	259	361	17	23
	HKU 香港大学	555	601	356	402	18	16
Engineering 工程学	All institutions 全部院校	5 908	6 352	4 322	4 656	234	229
	CityU 香港城市大学	930	1 072	715	749	28	42
	HKBU 香港浸会大学	82	70	69	62	-	4
	CUHK 香港中文大学	724	748	580	632	40	43
	HKIEd 香港教育学院	21	18	17	14	1	1
	PolyU 香港理工大学	2 106	1 861	1 332	1 156	46	23
	HKUST 香港科技大学	896	1 348	697	1 076	69	73
	HKU 香港大学	1 149	1 236	912	967	49	45
Humanities & Social Sciences 人文学及社会科学	All institutions 全部院校	8 999	9 499	5 880	6 114	188	201
	CityU 香港城市大学	1 170	1 356	777	884	19	30
	HKBU 香港浸会大学	1 119	1 238	578	672	4	13
	LU 岭南大学	465	484	184	244	-	-
	CUHK 香港中文大学	2 194	2 346	1 500	1 575	70	61
	HKIEd 香港教育学院	883	874	716	722	7	10
	PolyU 香港理工大学	707	754	429	350	12	6
	HKUST 香港科技大学	152	262	85	139	1	7
	HKU 香港大学	2 309	2 186	1 611	1 527	74	75
Business Studies 商科	All institutions 全部院校	1 449	1 418	1 020	948	57	59
	CityU 香港城市大学	291	319	209	216	9	7
	HKBU 香港浸会大学	82	70	78	69	2	-
	LU 岭南大学	126	90	81	64	1	3
	CUHK 香港中文大学	194	178	126	122	7	9
	HKIEd 香港教育学院	2	-	2	-	-	-
	PolyU 香港理工大学	467	437	320	249	20	3
	HKUST 香港科技大学	141	222	91	160	15	29
	HKU 香港大学	146	101	113	68	3	7

Appendix F: Research Outputs by Broad Subject Area and by Institution 附录F：按学科及院校分项的研究成果

- Notes :
1. Total research outputs include both refereed research outputs and non-refereed research outputs.
 2. The above research output figures refer to the number of items of research output produced by staff of academic departments and research postgraduate students.
 3. Information is based on self-reported statistical returns of institutions.
 4. Figures may not add up to the corresponding totals due to rounding.
- 注：
1. 研究作品总数包括经审阅的研究作品和未经审阅的研究作品。
 2. 以上数字为教学人员及研究课程研究生的研究成果。
 3. 有关资料为各院校自行申报的统计数据。
 4. 由于四舍五入，数字总和可能与相对的总计略有出入。

Research Grants Council of Hong Kong

香港研究資助局

7/F., Shui On Centre, 6-8 Harbour Road,
Wanchai, Hong Kong.

香港灣仔港灣道6至8號瑞安中心7樓

Tel 電話: (852) 2524 3987

Fax 傳真: (852) 2845 1596

E-mail 電郵: rgc@ugc.edu.hk

Homepage 網址: www.rgc.edu.hk